



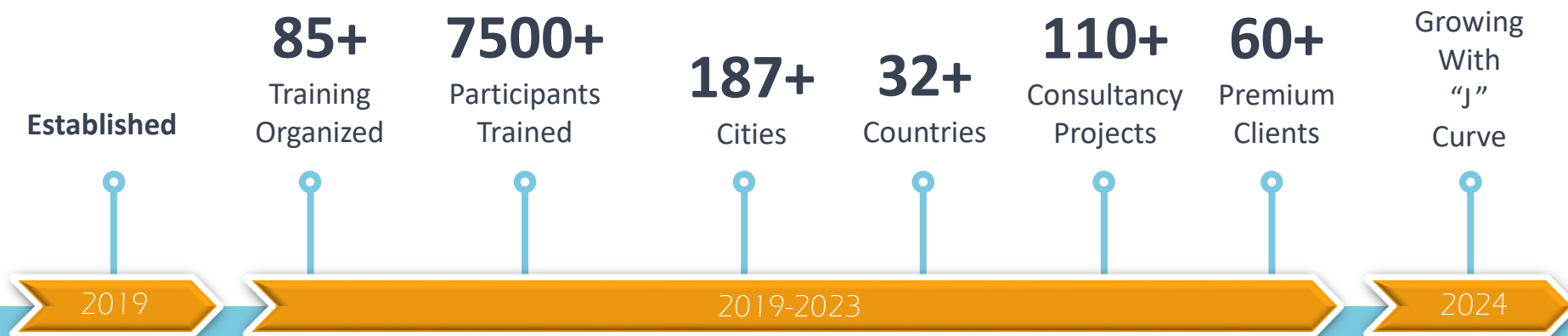
The Geographical Information System Lab

Leading Company in GIS Mapping Sector of India

A background illustration of a topographic map with various contour lines, some solid and some dashed, representing elevation and terrain. The map is rendered in black lines on a white background.

www.tgis.co.in

What Makes Us Special



TGIS has achieved remarkable success and rapid growth in a short time frame.

Our Mission

To deliver high-quality services that help clients make informed decisions based on accurate and up-to-date geographical data.

To raise GIS/ Remote Sensing Awareness through affordable, customized solutions for individuals to corporates with environmental consciousness.



QCI- NABET Approved Expert

- FAE: LU & EB (Landuse and Ecology & Biodiversity, Category- A)
- TAE: GWCO(Groundwater-RS & GIS)



Member of ISPRS

GIS Mapping Services

- Geospatial Solutions
- Consultancy Projects
- Research Analysis
- Webinars/ Workshops
- GIS Trainings



Affordable Rates



Speedy
Delivery



Data
Security

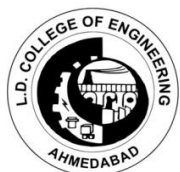
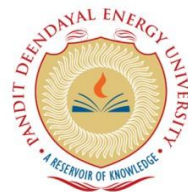
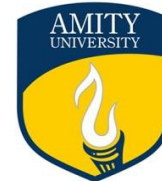


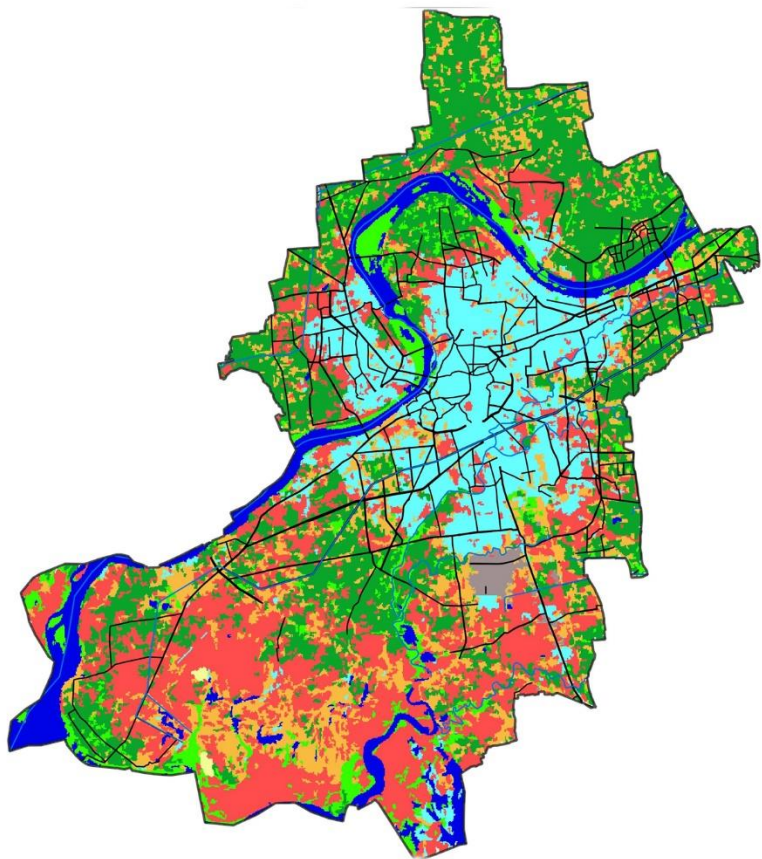
Dedicated
Team

Services in Different Sectors

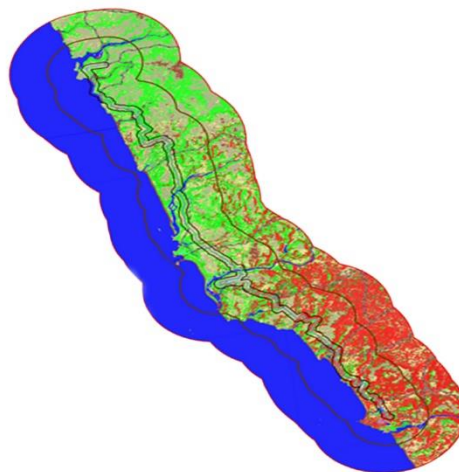
- Land Use Mapping
- Forestry
- Greenbelt
- Ecology and Wildlife Conservation
- Agriculture
- Environment Impact Assessment (EIA)
- Carbon Credits
- Hydrology/ Water Resources
- Groundwater Modelling
- Geology
- Urban Planning
- Climatology and Meteorology
- Sociology & Demography

Our Prestigious Clients





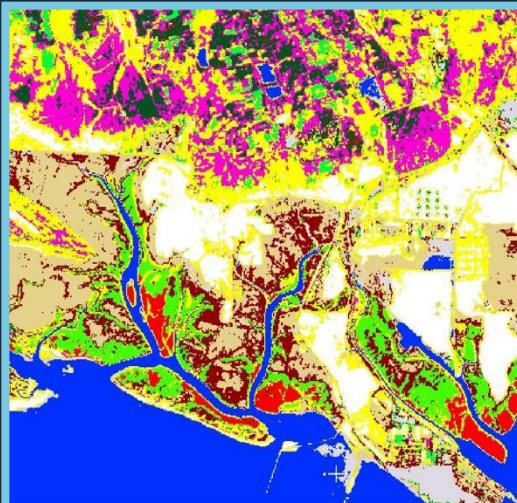
Town Planning Landuse Mapping



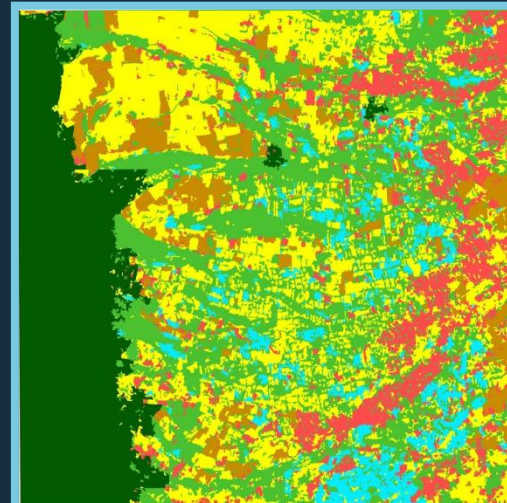
Infrastructural Landuse



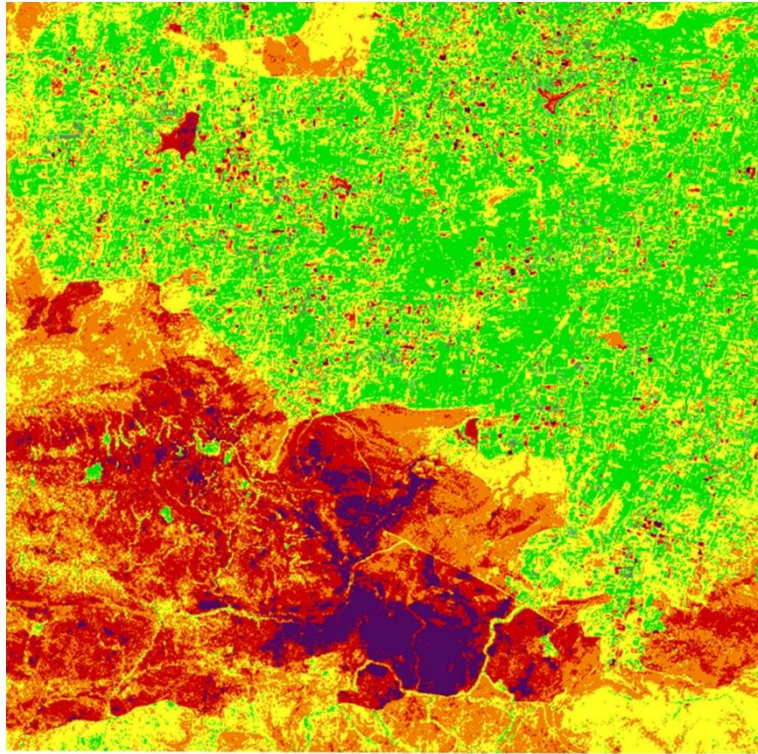
High Resolution Landcover



Mangrove Classification

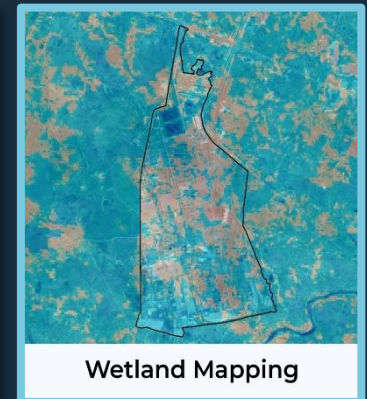
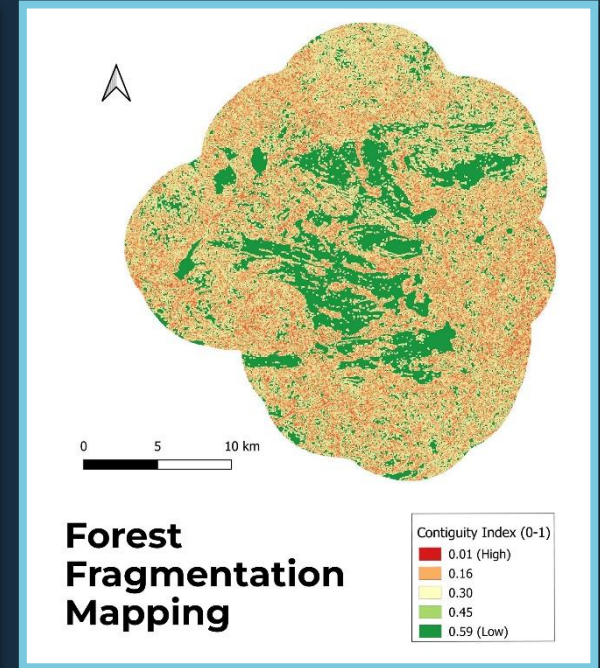
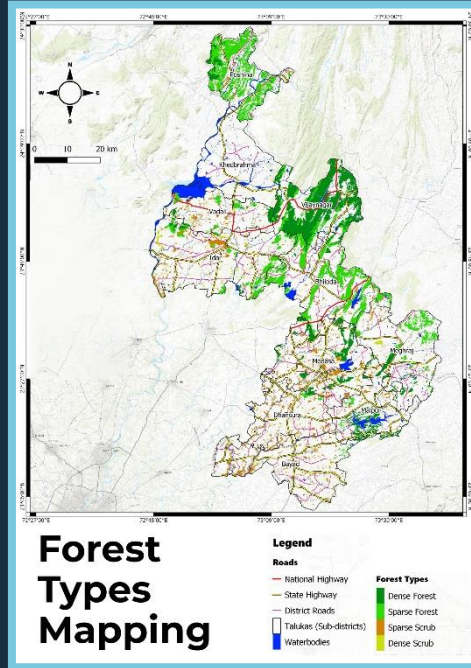


Agricultural Landuse



Forest Fire Monitoring

- Burn Severity**
- Enhanced Regrowth (High)
 - Enhanced Regrowth (Low)
 - Unburned
 - Low Severity
 - Moderate-Low Severity
 - Moderate-High Severity
 - High Severity



GREENBELT MAPPING

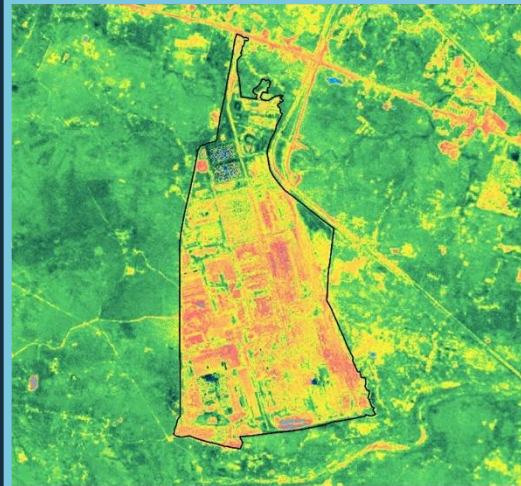


Tree Species Cover Map

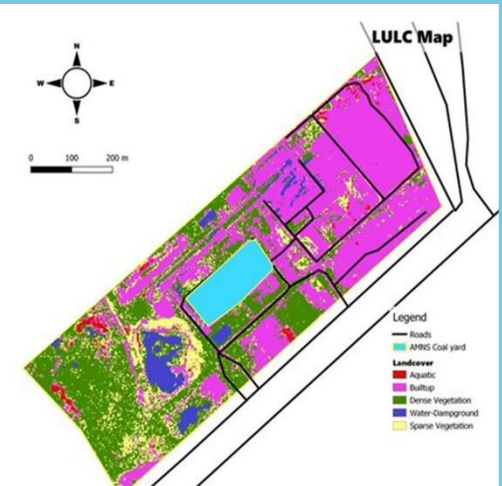
- Legend**
 □ Site Boundary
 Tree Cover
- Tree_cover.types copy**
- Acacia auriculiformis
 - Albizia lebeck
 - Alstonia scholaris
 - Anogossiss acuminata
 - Azadirachta indica
 - Borassus flabellifer
 - Callistemon viminalis
 - Cassia siamea
 - Delonix regia
 - Ficus benghalensis
 - Ficus religiosa
 - Leucaena leucocephala
 - Markhamia lutea
 - Millingtonia hortensis
 - Neolamarckia cadamba
 - Peltophorum pterocarpum
 - Plumeria alba
 - Pongamia pinnata
 - Pterospermum acerifolium
 - Roystonea regia
 - Samanea saman
 - Spathodea campanulata
 - Syzygium cumini
 - Tabebuia rosea
 - Tamarindus indica
 - Terminalia arjuna
 - Terminalia catappa
 - Terminalia phillyreifolia
 - Trachycarpus fortunei
 - Wodyetia bifurcata
 - Ziziphus jujube



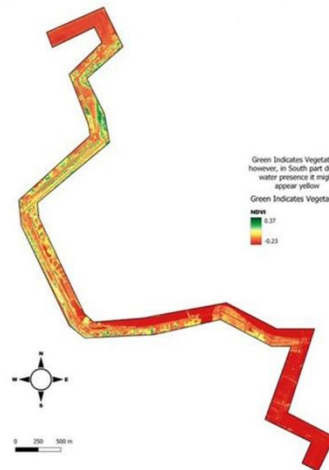
Tree Species Cover Map



Enhanced Vegetation Map



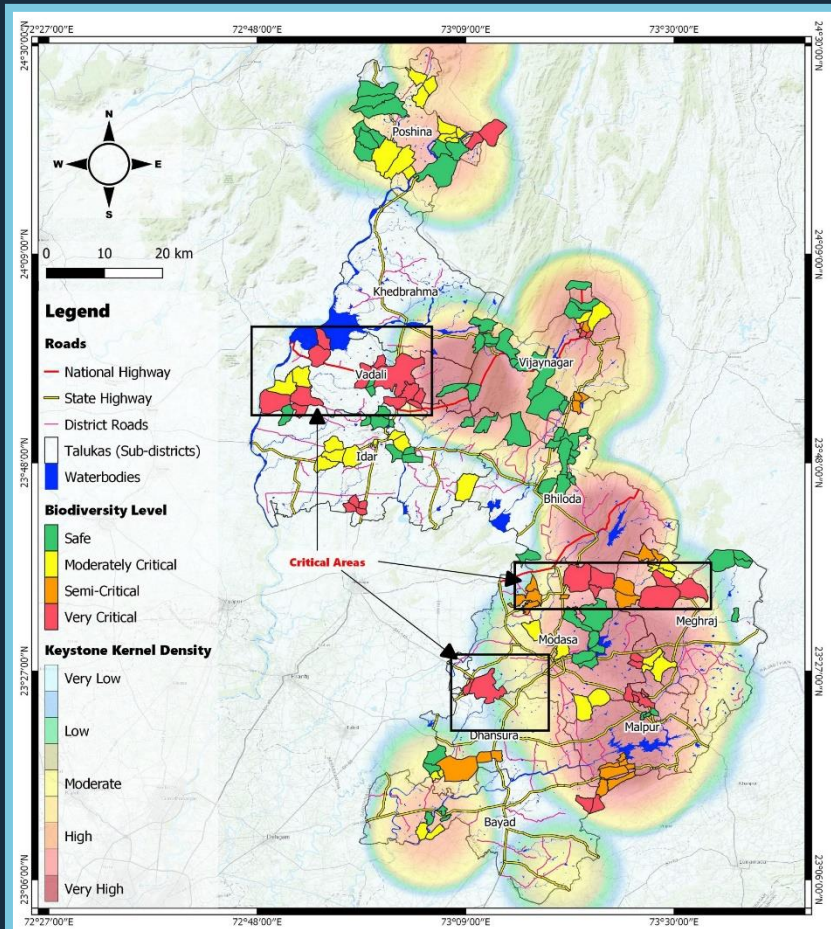
Industrial Landcover Map



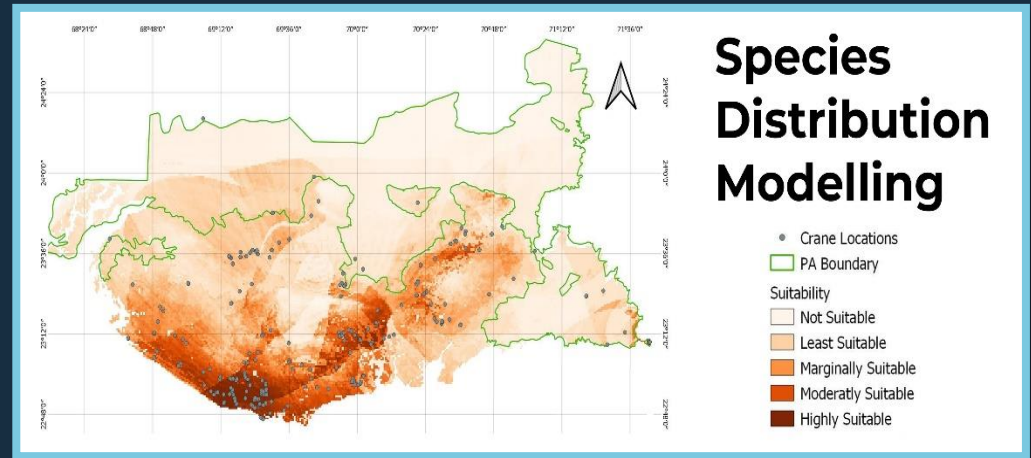
Greenbelt Map



High Resolution Industrial Belt

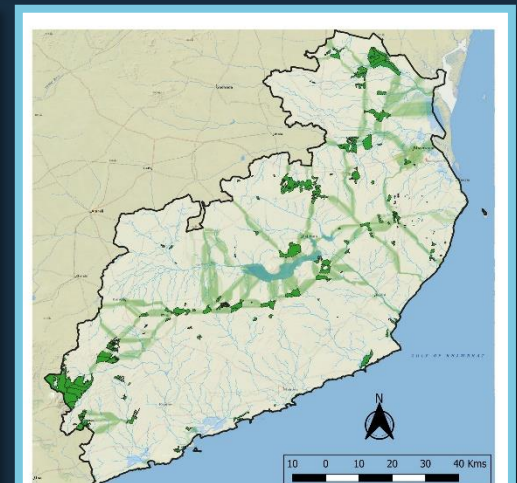


Species Richness and Biodiversity Mapping

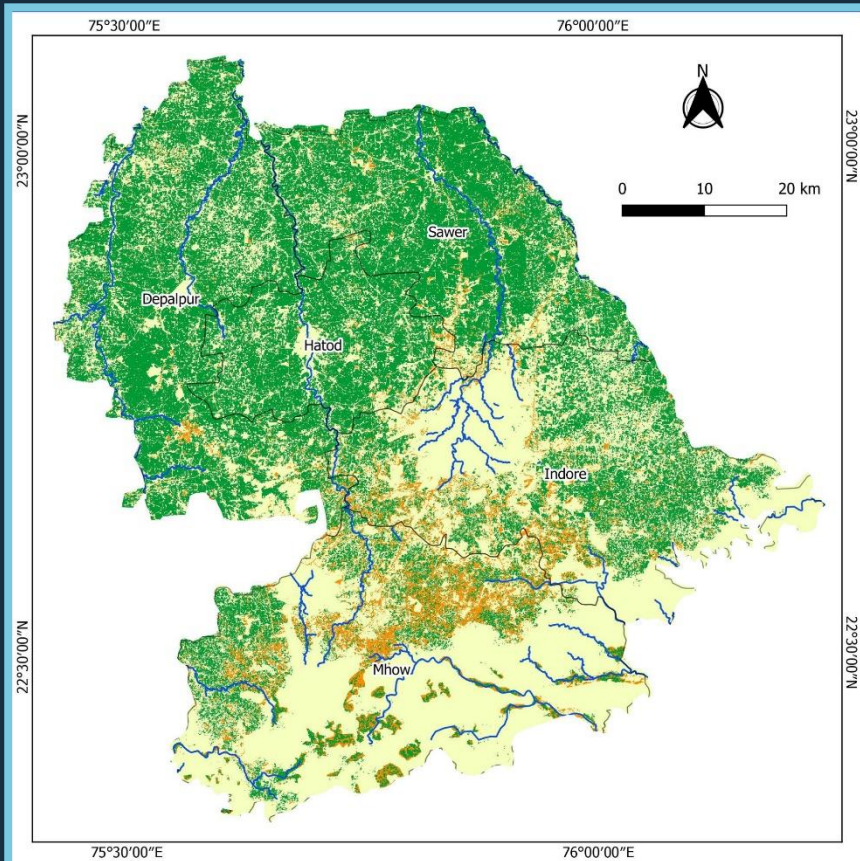


Home Range Mapping

- Leopard Name**
- Budi Ma
 - Cleopatra
 - Flora
 - Jalebi
 - Juliet
 - Leela
 - Mrs. Khan
 - Nathwani
 - Sharmili
 - Tintin
 - Zara
 - Basanti
 - LK
 - Laxmi
 - Unidentified #1F
 - Unidentified #2F



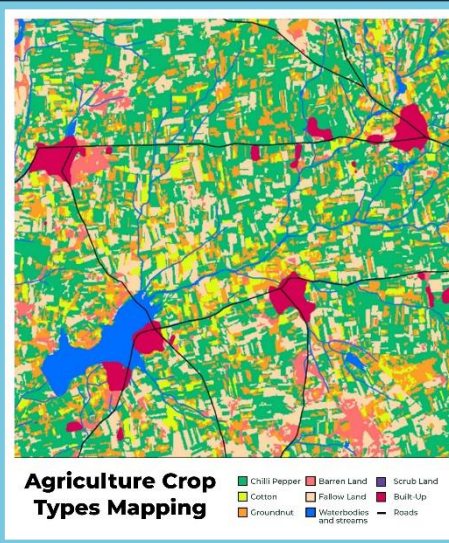
Wildlife Corridor Mapping



Irrigation Status Monitoring

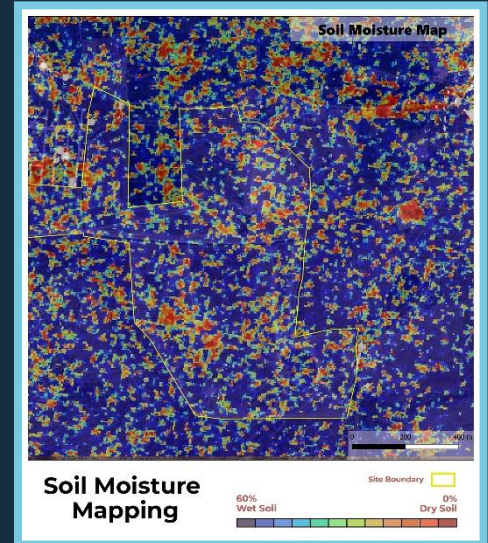
Irrigation Status Classes

- Major Streams/Canals
- Irrigated Cropped Area
- Non-Cropped Area
- Non-Irrigated Cropped Area



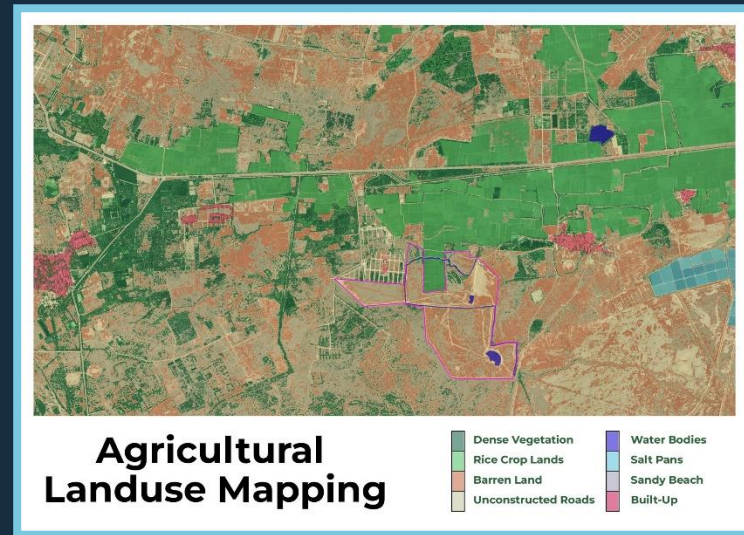
Agriculture Crop Types Mapping

- Chili Pepper
- Barren Land
- Scrub Land
- Cotton
- Fallow Land
- Bulk-Up
- Groundnut
- Waterbodies and streams
- Roads



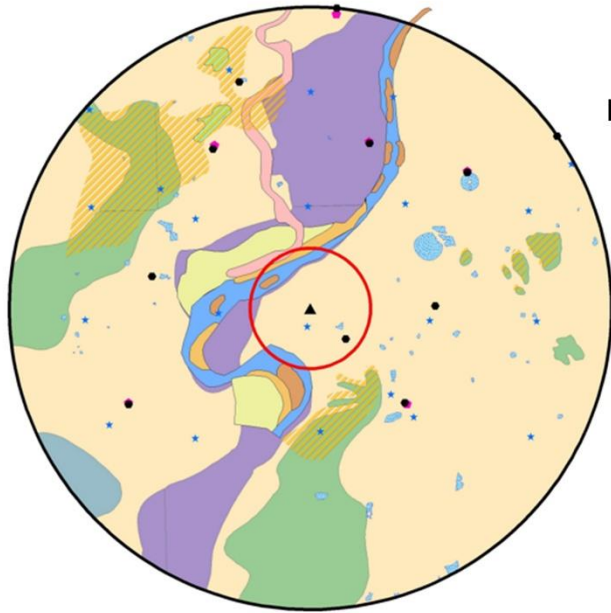
Soil Moisture Mapping

- 60% Wet Soil to 0% Dry Soil
- Site Boundary

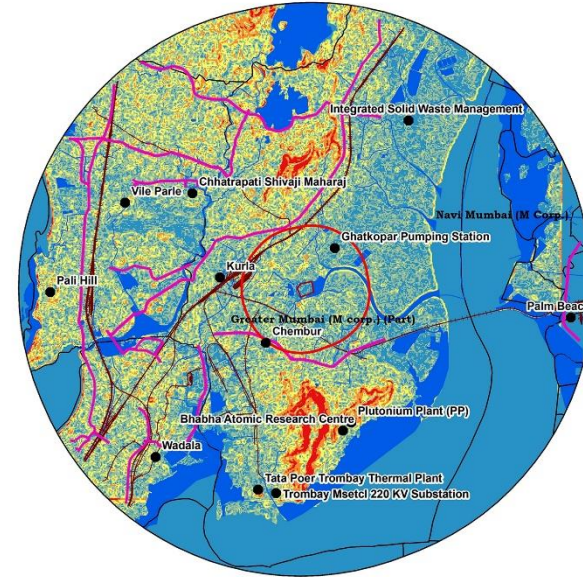


Agricultural Landuse Mapping

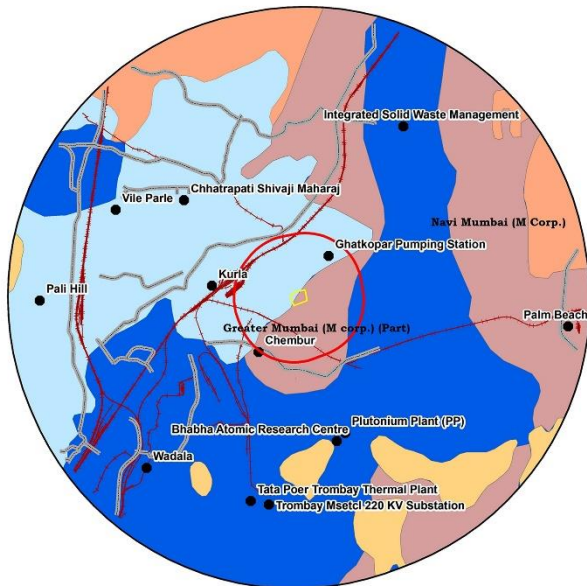
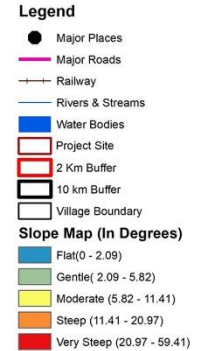
- Dense Vegetation
- Rice Crop Lands
- Barren Land
- Unconstructed Roads
- Water Bodies
- Salt Pans
- Sandy Beach
- Built-Up



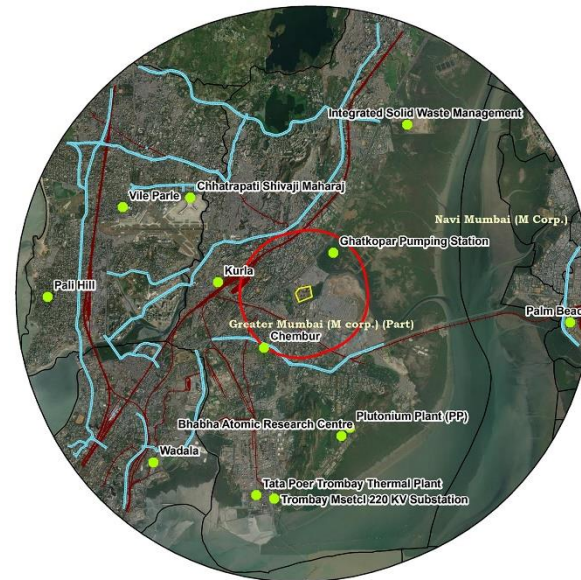
Hydro morphology



Slope Mapping

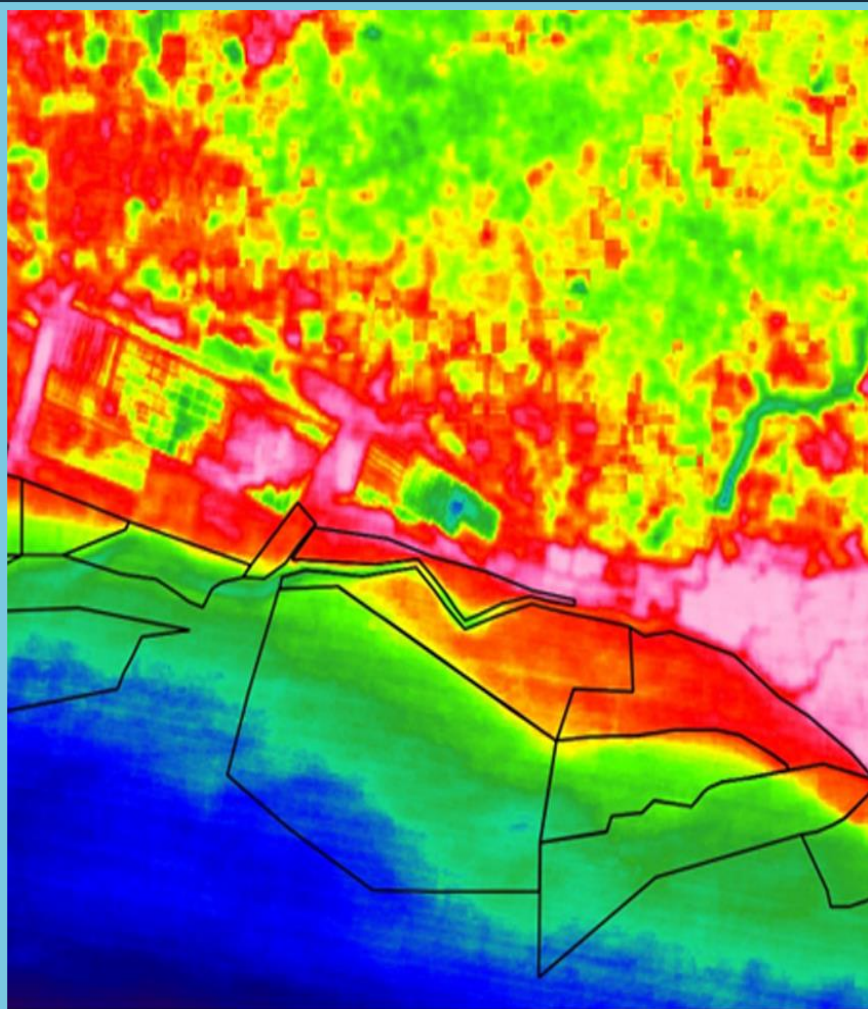


Soil Mapping



Locality Mapping

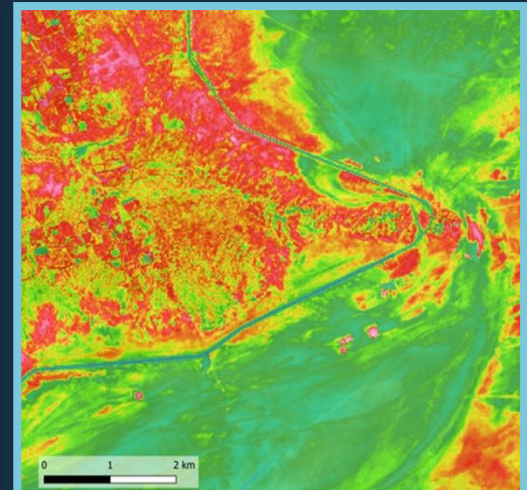




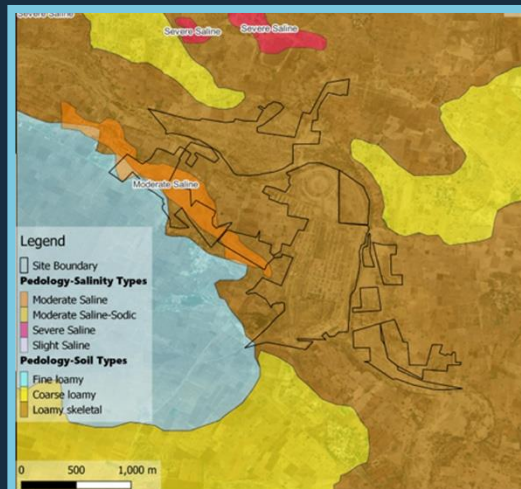
Carbon Stock Assessment



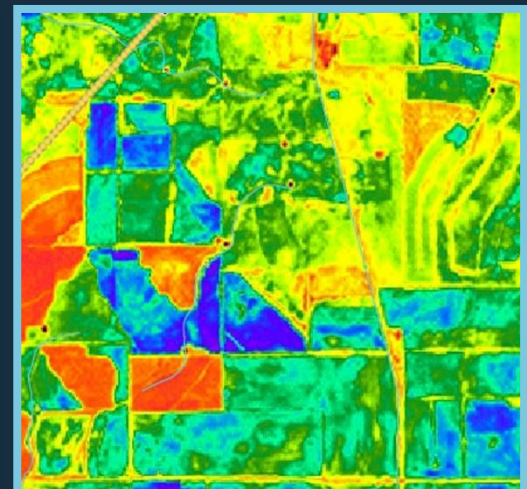
Sea Level Rise



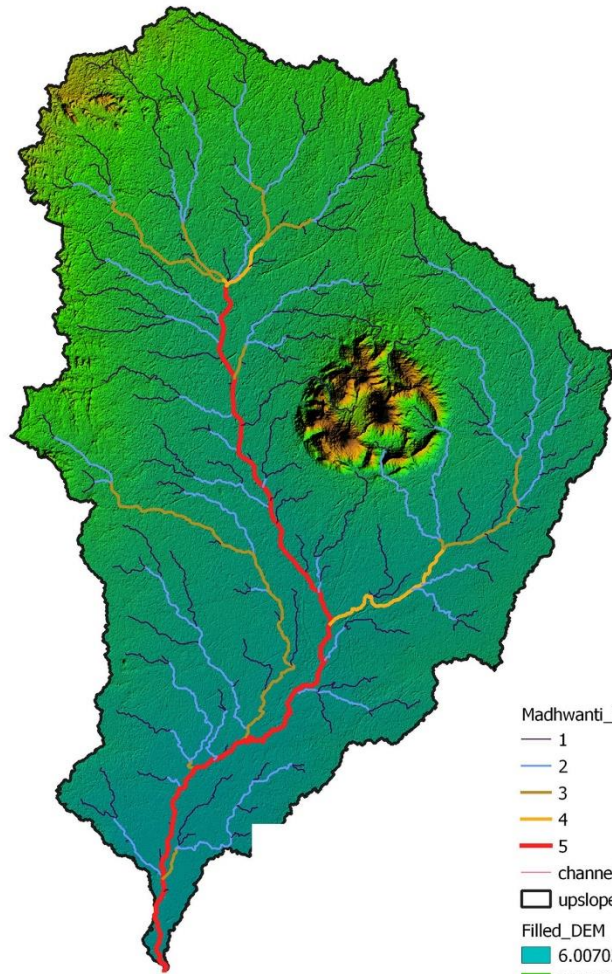
Salinity Mapping



Soil Type Mapping



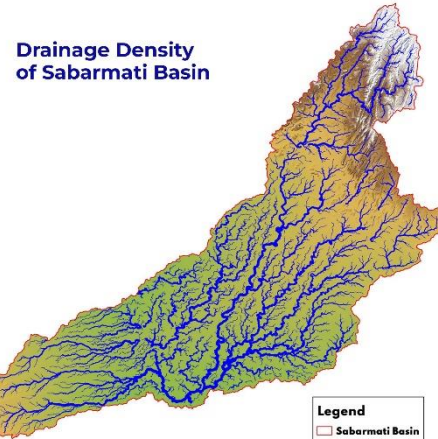
Crop Carbon Inventory



20 km
10
0

- Madhwanti_Streams
- 1
 - 2
 - 3
 - 4
 - 5
 - channels
 - upslopevector
- Filled_DEM
- 6.00702953338623
 - 207.50527215004
 - 409.003514766693
 - 610.501757383347
 - 812

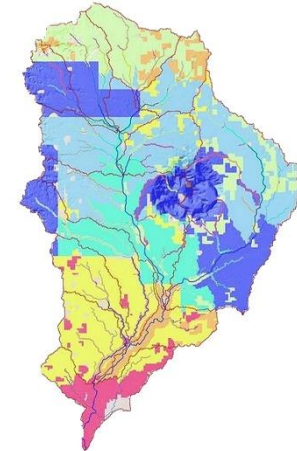
Watershed Mapping



Drainage Density of Sabarmati Basin

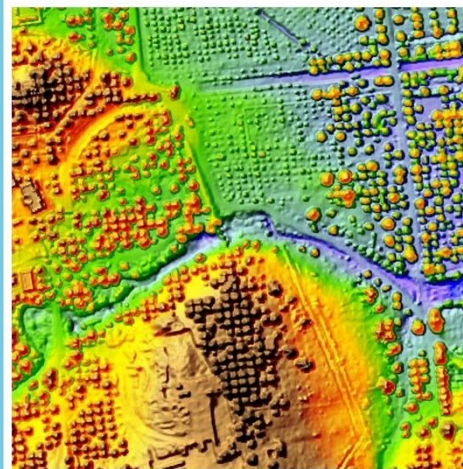
- Legend
- Sabarmati Basin
 - Drainage Density
 - 0 - 0.01
 - 0.01 - 0.04
 - 0.04 - 0.06
 - 0.06 - 0.12
 - 0.12 - 0.22

Morphometry Analysis

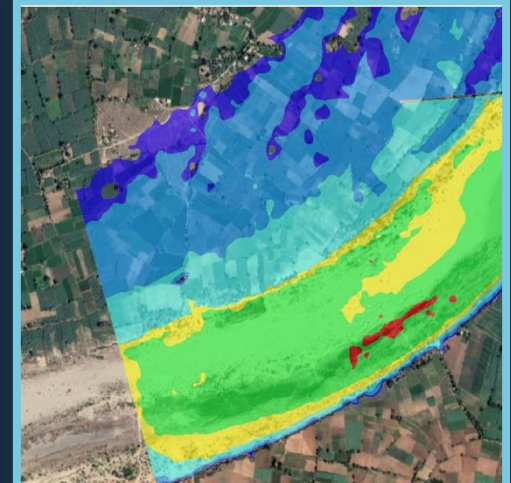


- Streams
- Subbasins
- Evapotranspiration (in mm)
- 2548 - 6261
 - 6261 - 6434
 - 6434 - 6590
 - 6590 - 6924
 - 6924 - 7080
 - 7080 - 7867
 - 7867 - 34265

Hydro-Climatological Models

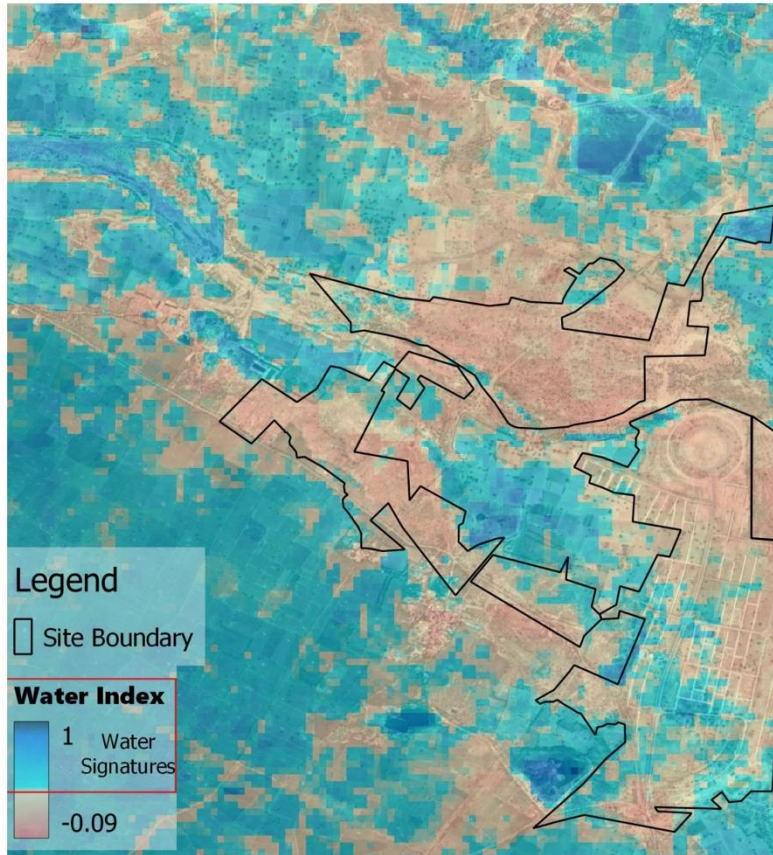


Flood Modelling

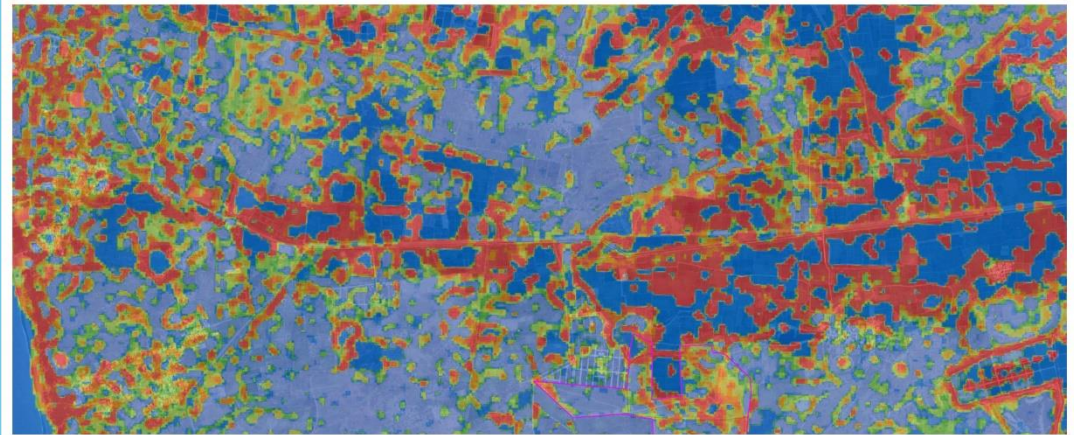


Water Resource Mapping

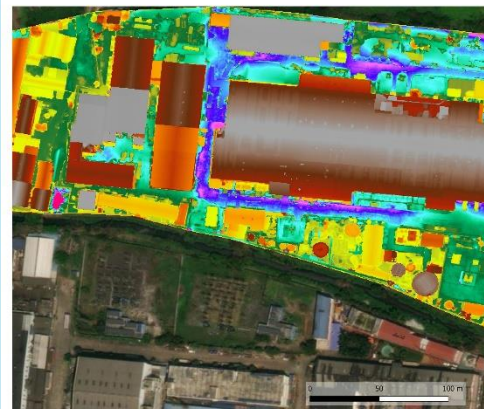
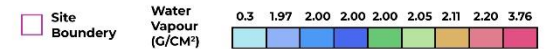
ISHM (INDUSTRIAL SURFACE HYDROLOGY MAPPING) TGIS



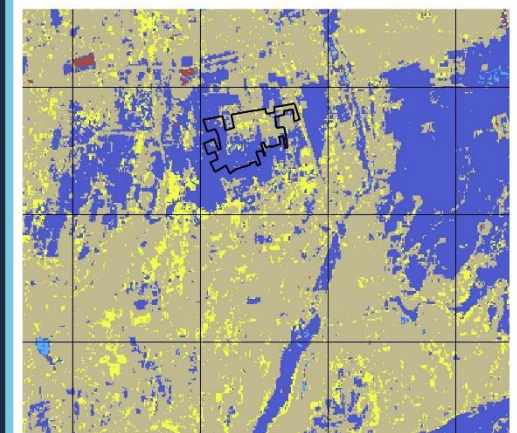
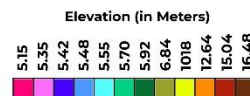
Temporal Water Level Map



Water Vapour Map

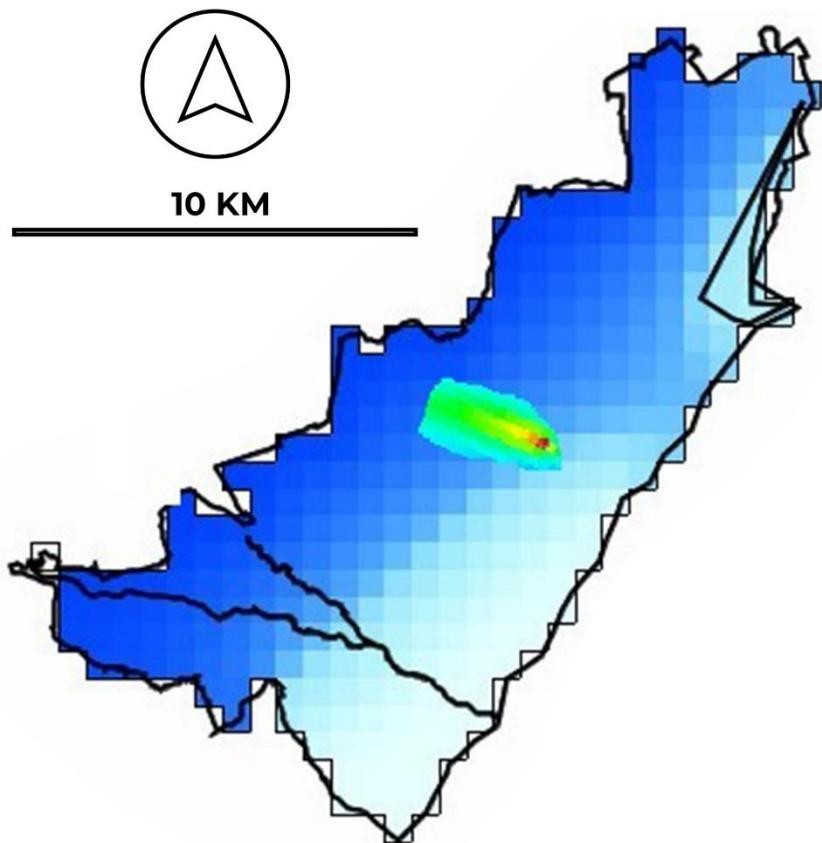


Digital Terrain Modelling

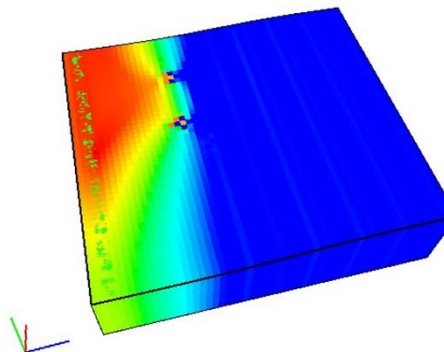


Surface Water Category

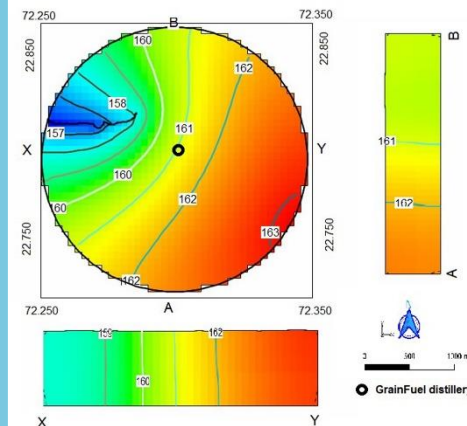




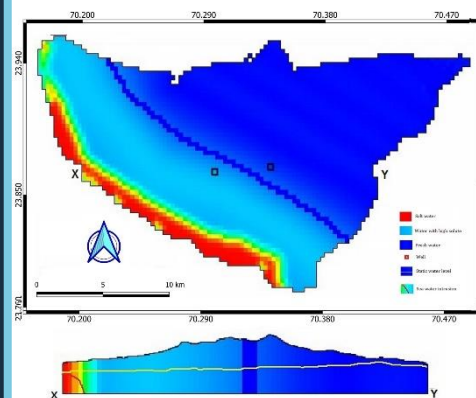
Contamination Transport Modelling



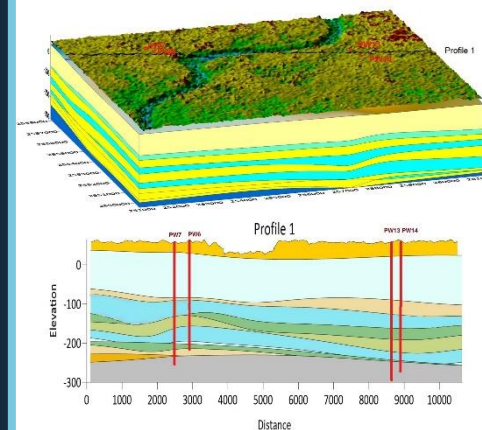
Well Extraction Mapping



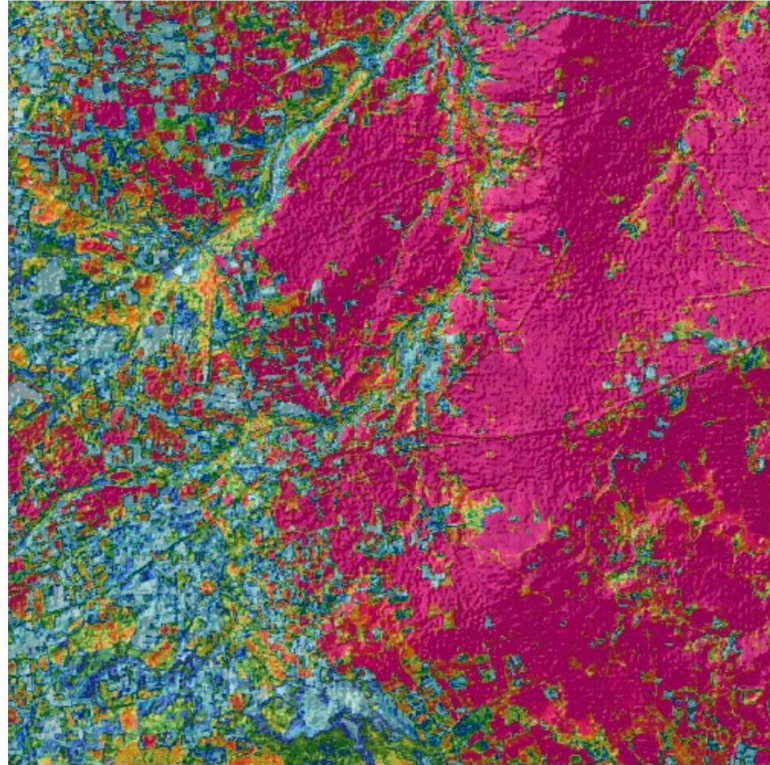
Groundwater Contours



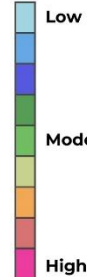
Seawater Intrusion Modelling



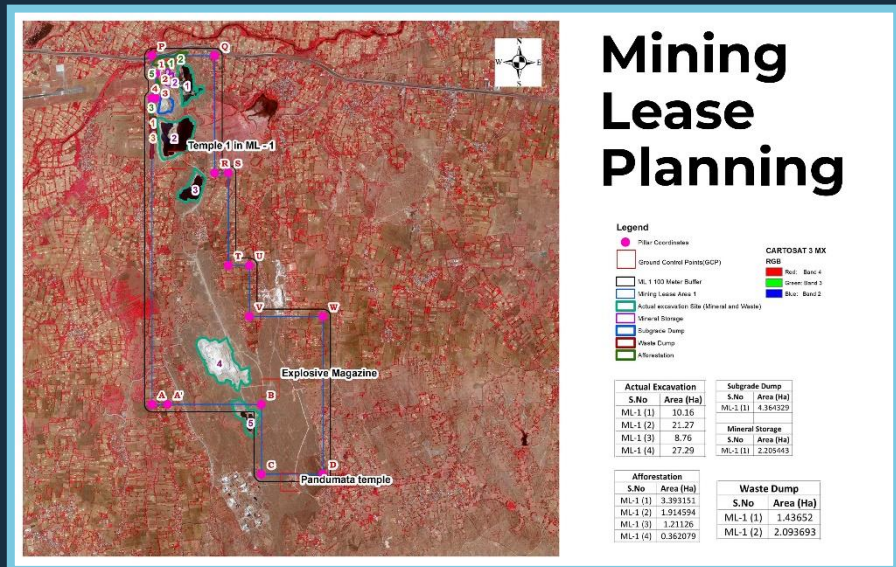
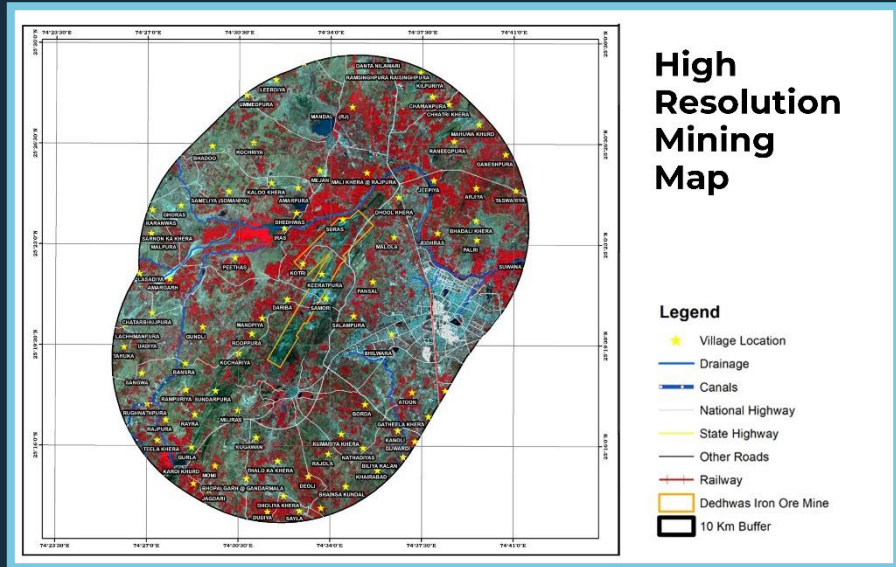
3D Aquifer Modelling



Ferrous Iron Content



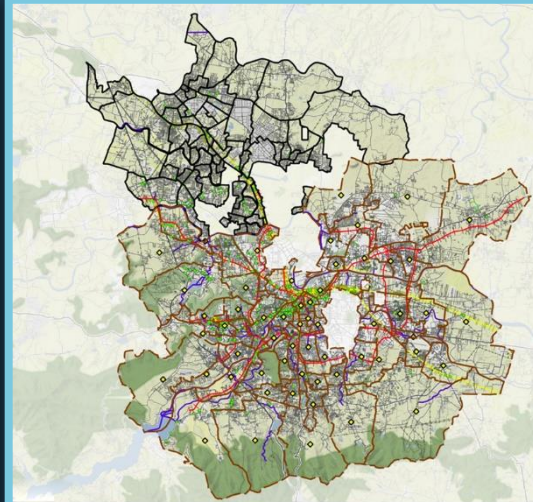
Mineral Exploration



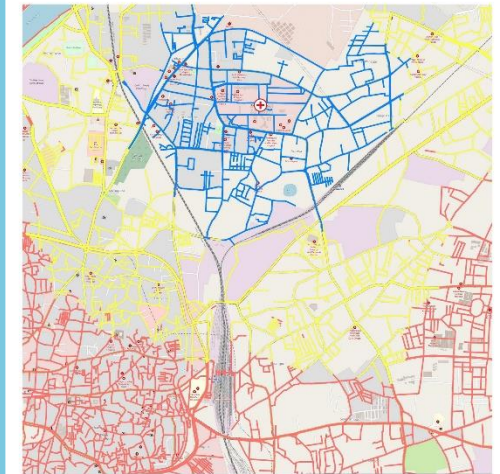


Machine Learning based

Building Footprint Extraction

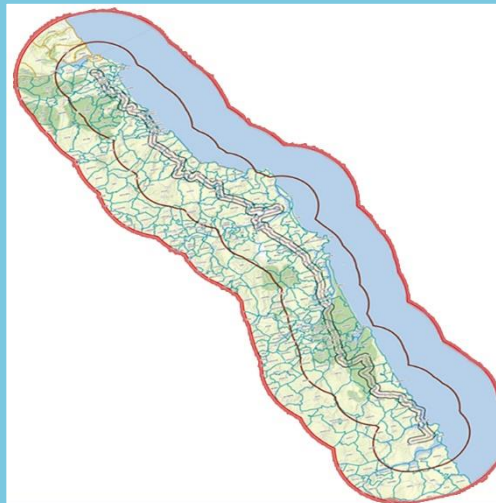


Network Analysis Map

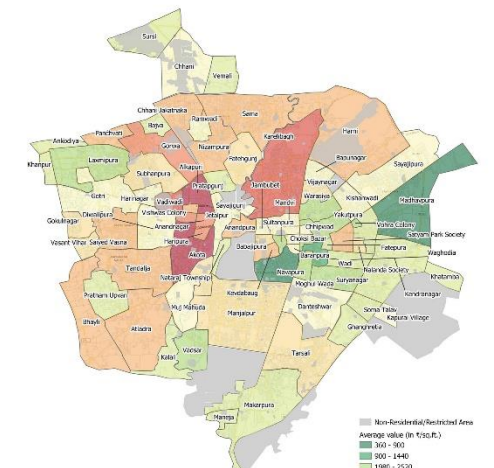


Hospital Networking

Legend
 ● Civil Hospital
 — 5 — 10 — 20
 Ambulance Travel Time (mins) on Roads



Highway Expansion Project

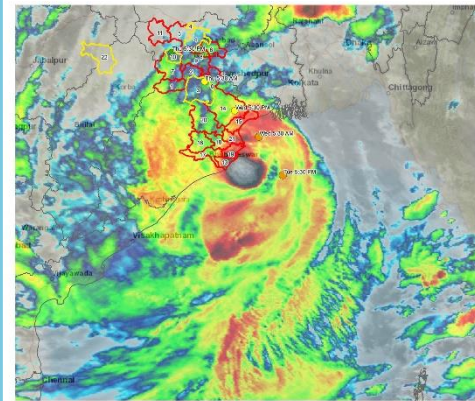
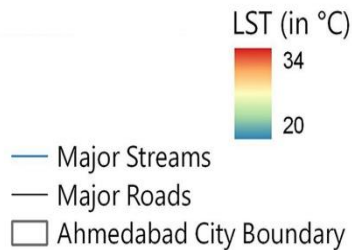


Real Estate Mapping

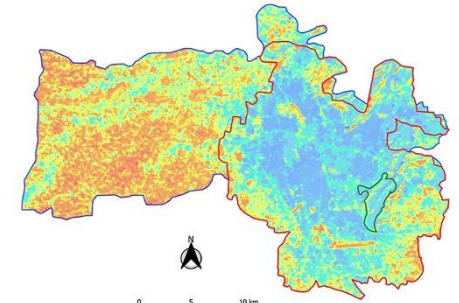
— Non-Residential/Restricted Area
 Average value (₹/sq.ft.)
 300 - 900
 900 - 1440
 1440 - 2520
 2520 - 3060
 3060 - 3600
 3600 - 4140
 4140 - 4680
 4680 - 5220
 5220 - 5760
 5760 - 6300



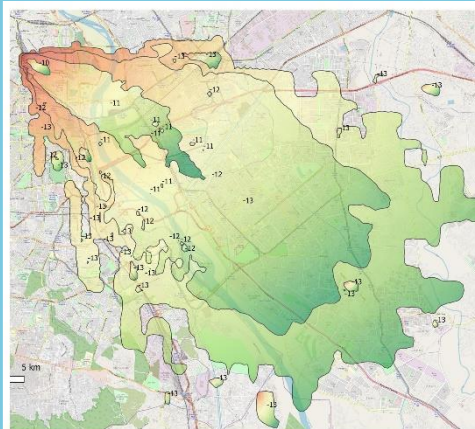
Urban Temperature Modelling



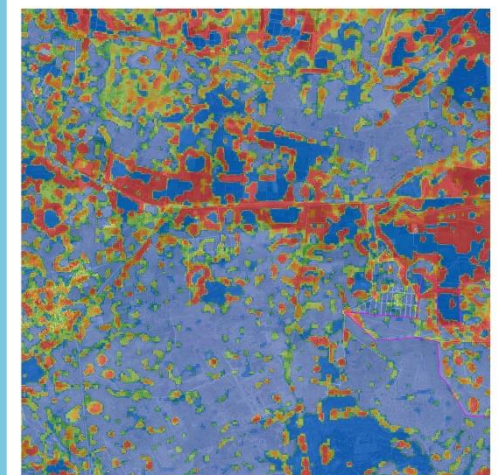
Cyclone Forecast Mapping



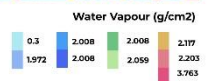
Land Surface Temperature Mapping

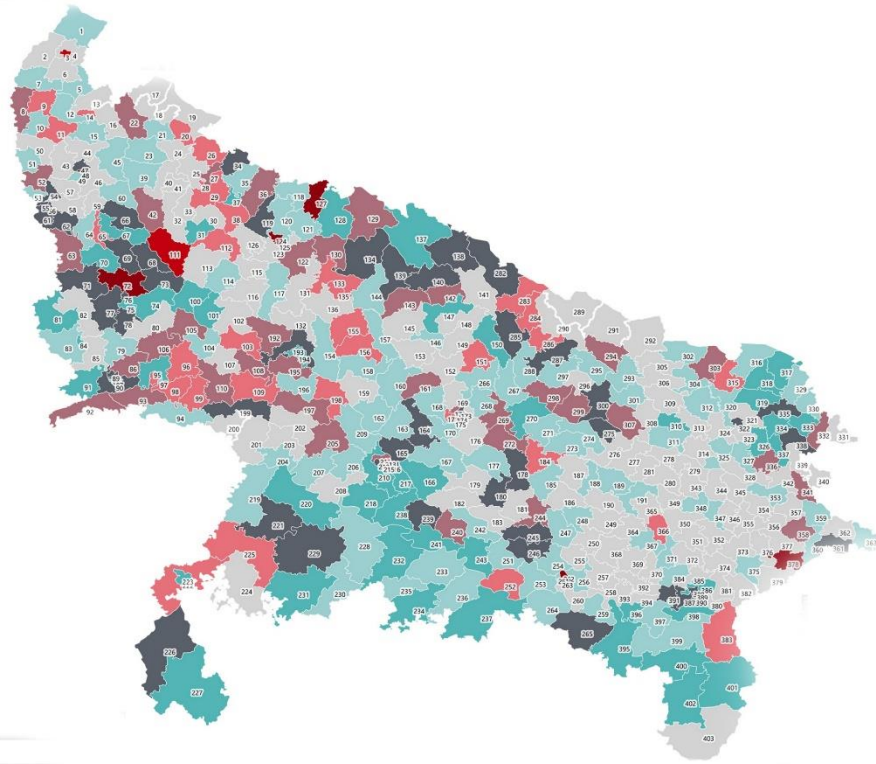


Air Pollution Modelling

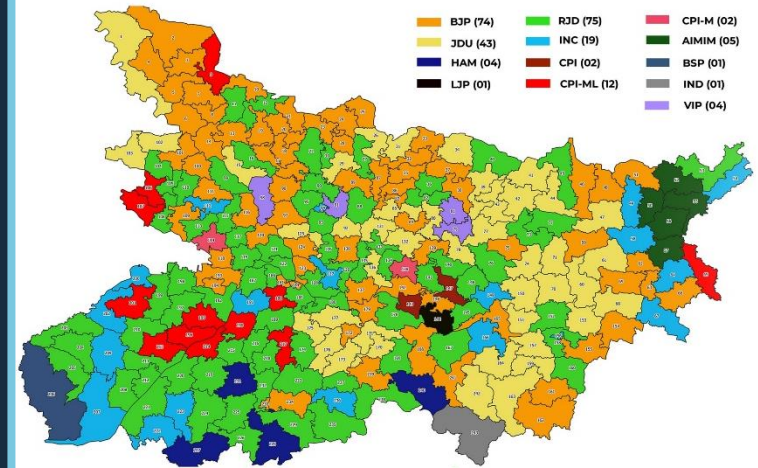
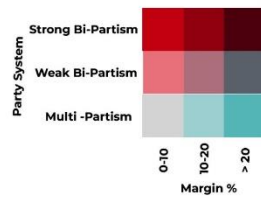


Moisture Mapping



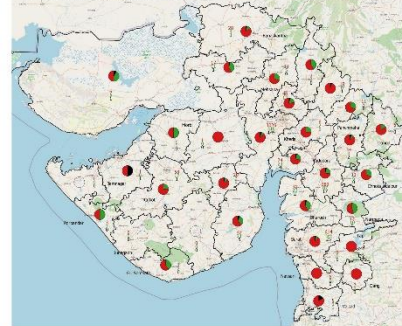


Demographical Mapping



National/ State Election Mapping

Corona Spread Map (1 May 2020)




Public Health Mapping



Historical Mapping



The Geographical Information System Lab

 +919898120110

 info@tgis.co.in | infotgislab@gmail.com

 Touch to Explore



www.tgis.co.in

 526, Iscon Emporio, Jodhpur Cross Rd, Satellite, Ahmedabad, Gujarat. 380015.