

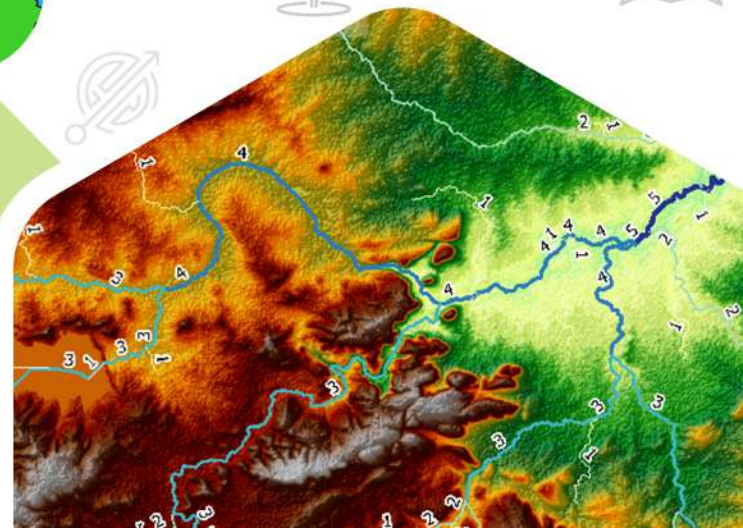
# TGIS<sup>TM</sup>

The Geographical Information System Lab

Leading Company of GIS Sector in India

## 1 MONTH QGIS FUNDAMENTALS COURSE

FEB 2025



[www.tgis.co.in](http://www.tgis.co.in)



# WHY US?



**100+**

Trainings/  
Workshops  
Organised



**9000+**

Participants  
Trained



**26+**

International  
Publications  
with  
Students



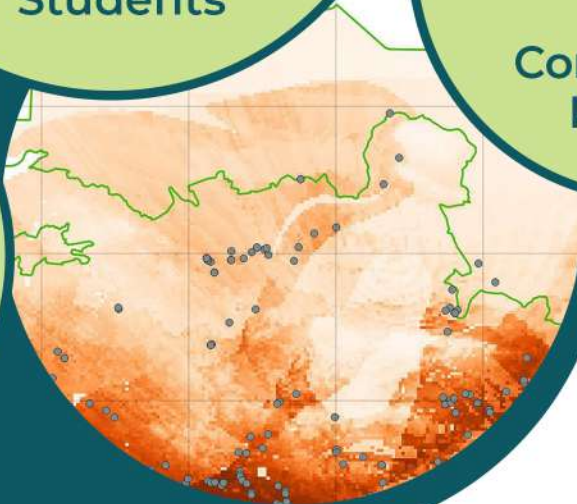
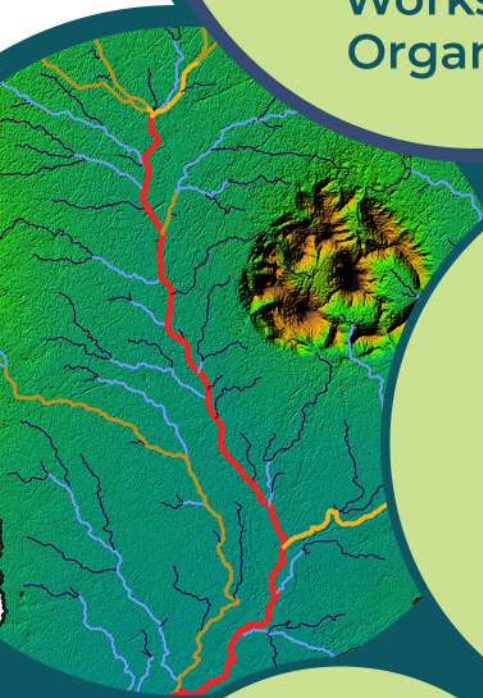
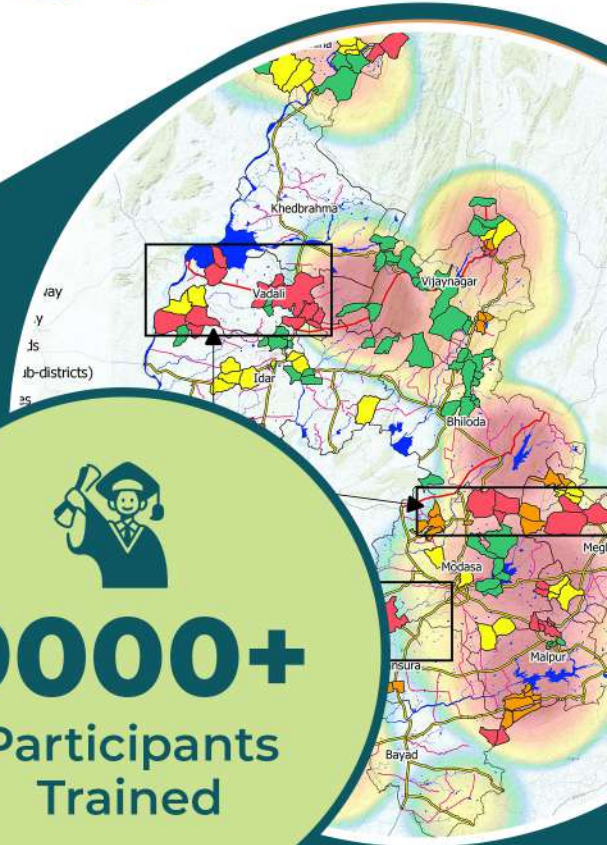
**125+**

Live  
Consultancy  
Projects



**33+**

Countries  
Covered





## Module 1 | Day 1

📅 1 Feb 2025

🕒 2 Hrs

### Fundamentals of RS and GIS.

- Introduction to Remote Sensing (RS) and GIS.
- Use of RS/GIS in Earth Science applications.
- Overview/Installation of QGIS software.



## Module 2 | Day 2

📅 2 Feb 2025

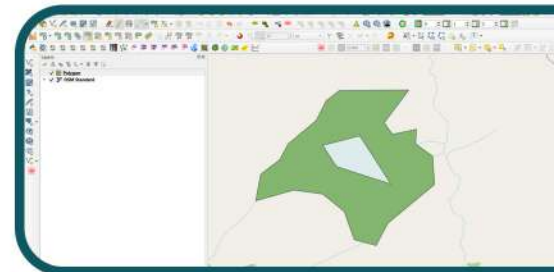
🕒 2 Hrs

### Georeferencing

- Georeferencing and its importance
- Practical demonstration of georeferencing raster data in QGIS.
- Hands-on exercises

### Basics / Advanced Digitization

- Creating and editing new features with topology checks
- Tracing, snapping, Merge, split, rotate, mirror, etc.
- Practice sessions in QGIS to master in skills.



## Module 3 | Day 3

📅 8 Feb 2025

🕒 2 Hrs

### Proximity Analysis

- Demonstration and exercise of buffer creation & various proximity plugins

### Attribute Data Handling and Spatial query

- Introduction to attribute data and database management
- Importing, exporting, and managing attribute tables
- Explanation of spatial queries and their significance
- Practice exercises on combining attribute and spatial queries (Live Data)



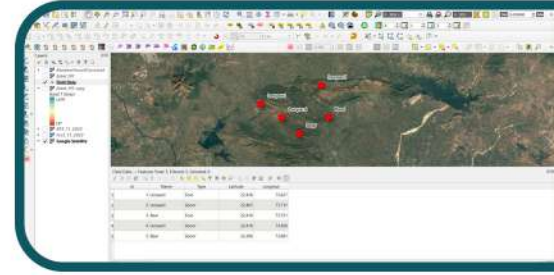


## Module 4 | Day 4

9 Feb 2025 2 Hrs

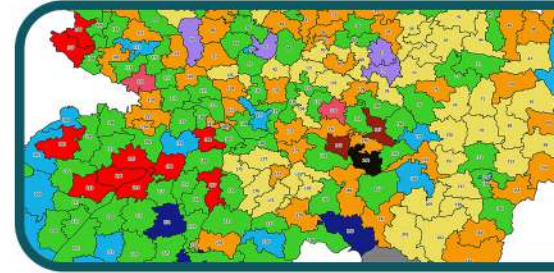
### Techniques for Field Sampling

- Overview of field sampling techniques and their role in data collection
- Demonstrations on designing field sampling strategies using QGIS
- Hands-on exercises on creating sampling grids and random point generation
- Methods for importing/ exporting field data



### Thematic Mapping (Map Diagrams and 2.5D)

- Creating thematic maps using different classification methods
- Introduction to map diagram/ pie chart and their visualization techniques
- Generating 2.5D maps to represent elevation or thematic data

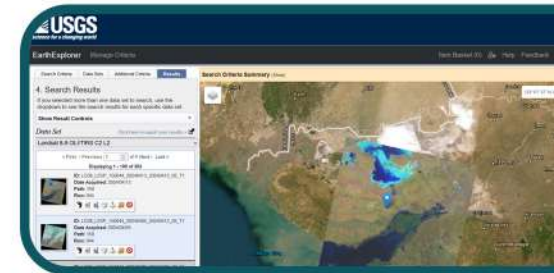


## Module 5 | Day 5

15 Feb 2025 2 Hrs

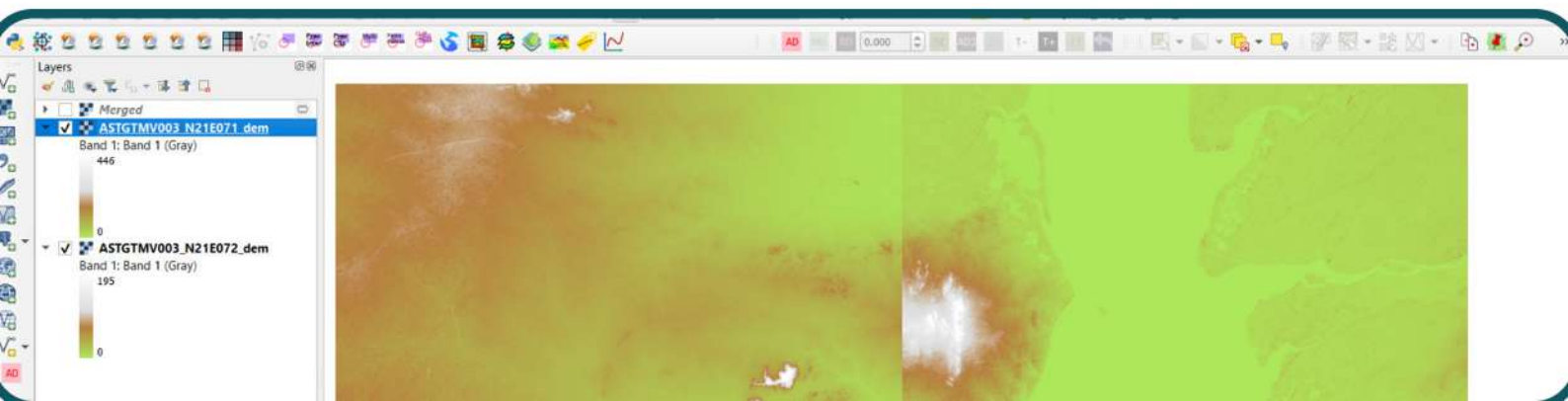
### Satellite Data Platforms

- Overview of satellite data platforms and their applications for GIS applications.
- Accessing and importing satellite imagery from different platforms in QGIS.



### Image Processing (Mosaicking, Clip, Layer Stacking)

- Techniques for image processing using QGIS tools
- Mosaicking multiple images, clipping to a specific area of interest, and layer stacking for analysis.
- Hands-on practice on image processing tasks using QGIS with Live Example.



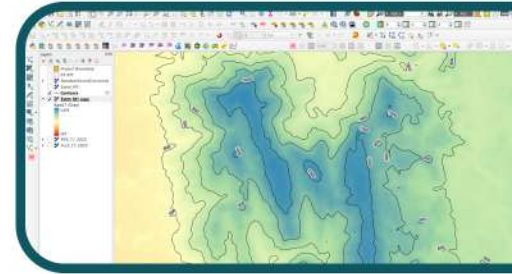


## Module 6 | Day 6

📅 22 Feb 2025 ⌚ 2 Hrs

### Topographical Analysis (Slope, Contour, Aspect, Elevation)

- Explaining topographical analysis and its significance in GIS.
- Calculating slope, contour lines, aspect, and elevation from digital elevation models (DEMs)
- Practical exercises on terrain analysis



## Module 7 | Day 7

📅 23 Feb 2025 ⌚ 2 Hrs

### Final Q & A Session on the QGIS Fundamentals

- Recap of key concepts covered throughout the course.
- Open floor for participants to ask any lingering questions or seek clarification
- Demonstrating solutions to specific queries or problems raised by participants.
- Encouraging participants to share their experiences and insights gained from this course.

**\* 1 week training support will be provided after the last module.**

## Who Can Participate

# OPEN FOR ALL

## Inclusion

- Live Demonstration
- Step by Step Tutorial (PDF)
- E-Certificate
- GIS Database (For Workshop)
- Reading Material

## Fees

**2999 INR | 40 USD or EURO**

~~4999 INR | 60 USD | 55 EURO~~

## Registration Link

[www.tgis.co.in/upcoming-workshops](http://www.tgis.co.in/upcoming-workshops)

\*Detailed Course Schedule and Joining Links shall be forwarded to the Paid Participants Only.

## 30 Seats Only

(\*First come, First serve only)

Scan QR Or  
Touch to Register





# TGIS<sup>TM</sup>

The Geographical Information System Lab

*Let's Connect Today!*



+91 98981 20110



info@tgis.co.in



526, Iscon Emporio, Jodhpur Cross Rd,  
Satellite, Ahmedabad, Gujarat. 380015.



www.tgis.co.in



Touch and Travel to Our Social Media