



The Geographical Information System Lab
ISO 9001:2015 Certified Company

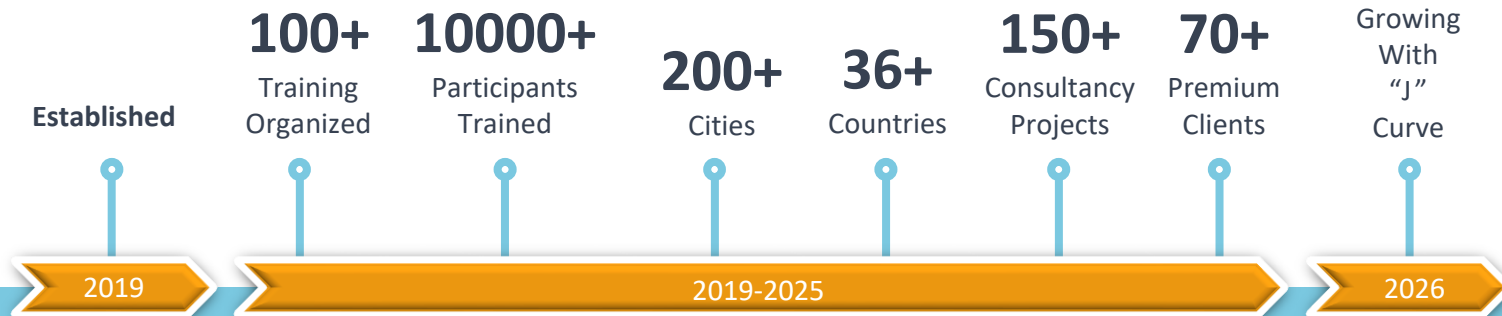
www.tgis.co.in

An ISO CERTIFIED 9001:2015 Company

Leading Company in GIS Mapping Sector of India

www.tgis.co.in

What Makes Us Special



TGIS has achieved remarkable success and rapid growth in a short time frame.

Our Mission

To deliver high-quality services that help clients make informed decisions based on accurate and up-to-date geographical data.

To raise GIS/ Remote Sensing Awareness through affordable, customized solutions for individuals to corporates with environmental consciousness.



QCI- NABET Approved Expert

- FAE: LU & EB (Landuse and Ecology & Biodiversity, Category- A)
- TAE: GWCO(Groundwater-RS & GIS)



Member of ISPRS

GIS Mapping Services

- Geospatial Solutions
- Consultancy Projects
- Research Analysis
- Webinars/ Workshops
- GIS Trainings



Affordable
Rates



Speedy
Delivery



Data
Security



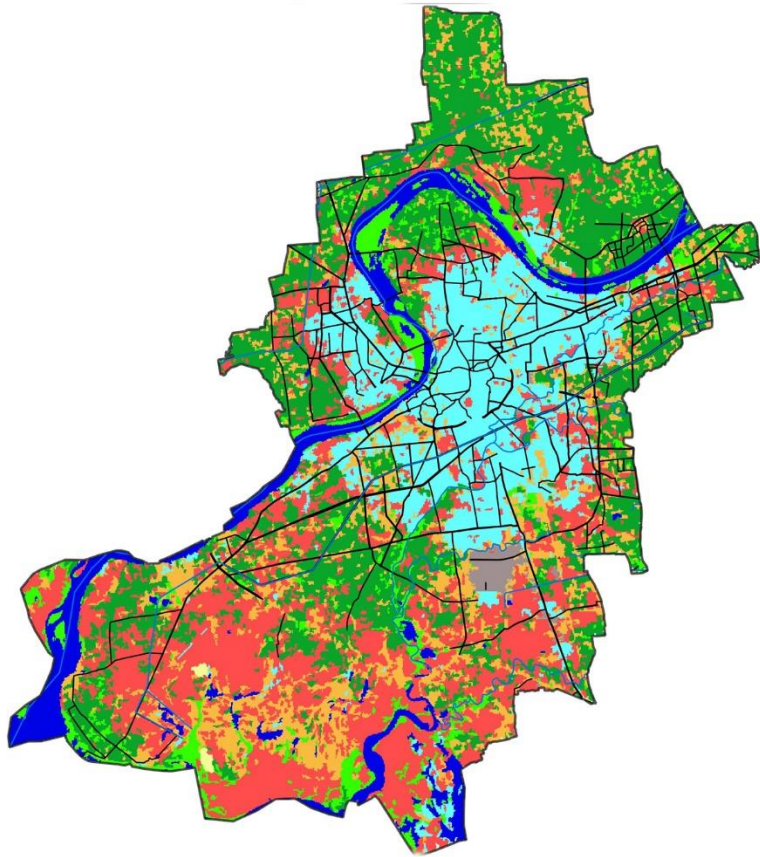
Dedicated
Team

Our Other Forestry Mapping Services

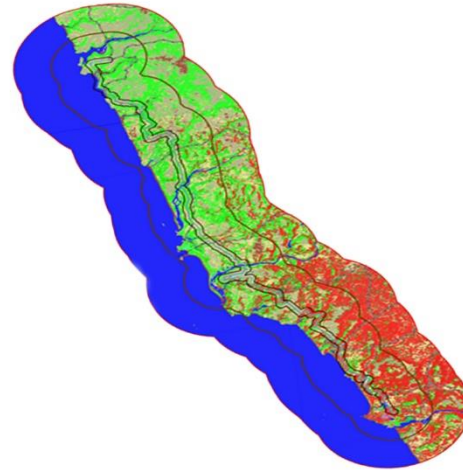
- Drone Mapping and Surveying
- Land Use Mapping
- Forestry
- Greenbelt
- Ecology and Wildlife Conservation
- Agriculture
- Environment Impact Assessment (EIA)
- Carbon Credits
- Hydrology/ Water Resources
- Groundwater Modelling
- Geology
- Urban Planning
- Climatology and Meteorology
- Sociology & Demography
- Geospatial Dashboard

Our Prestigious Clients





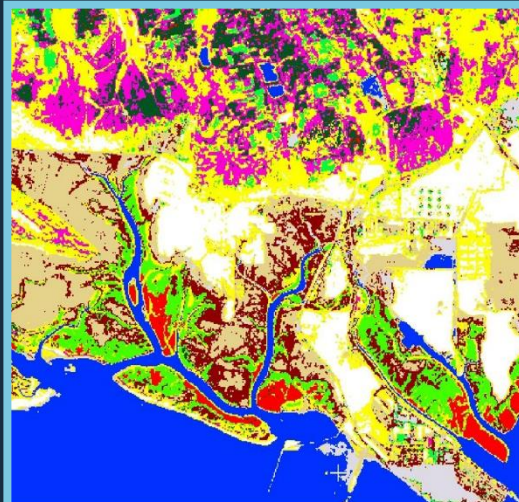
Town Planning Landuse Mapping



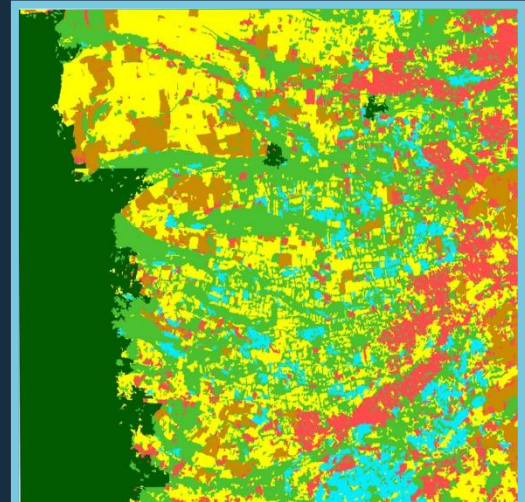
Infrastructural Landuse



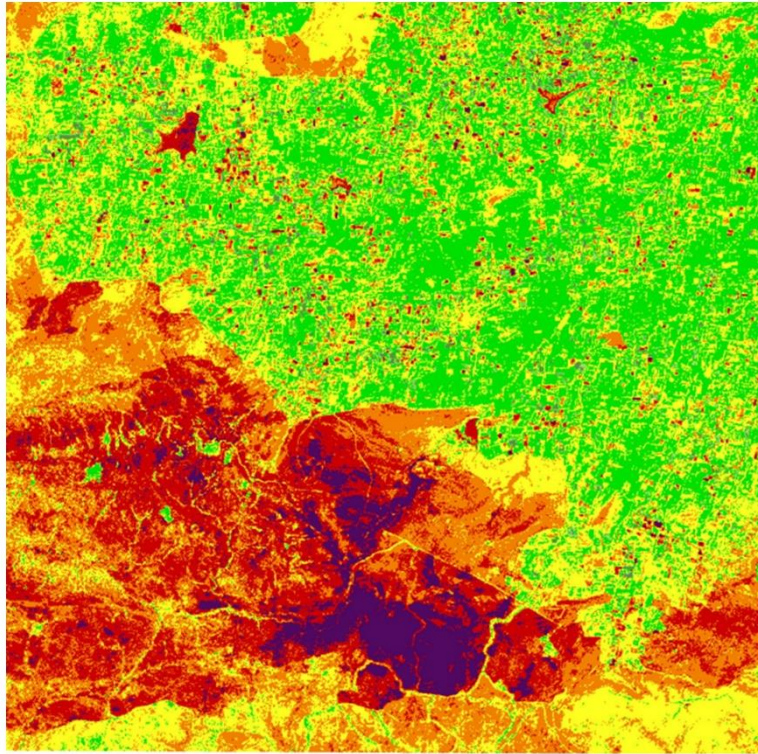
High Resolution Landcover



Mangrove Classification

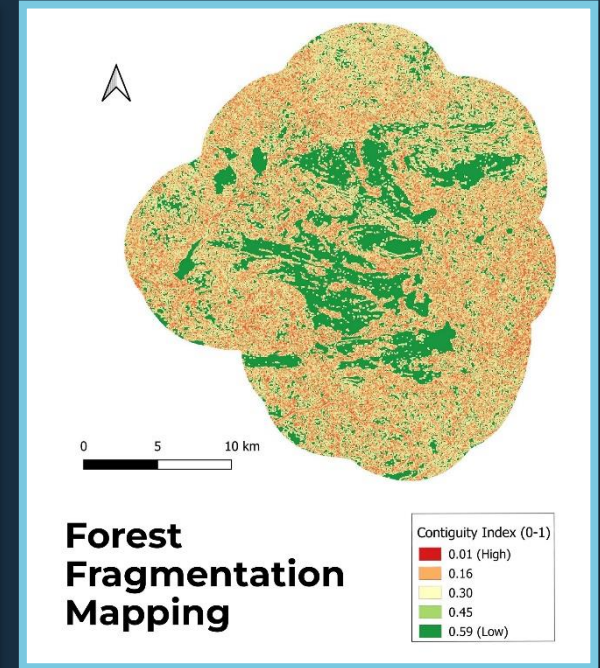
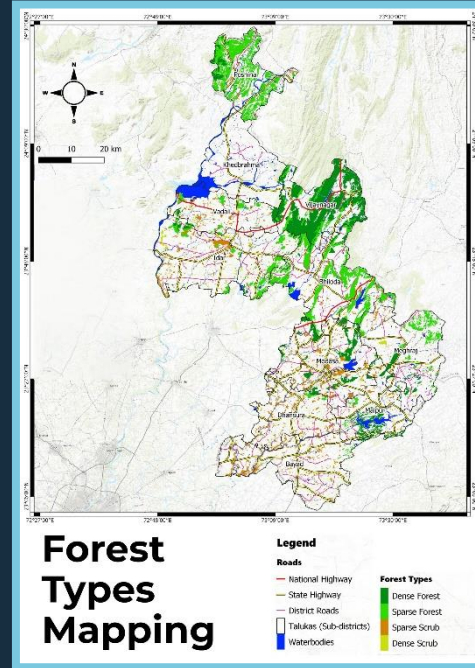


Agricultural Landuse



Forest Fire Monitoring

- Burn Severity**
- Enhanced Regrowth (High)
 - Enhanced Regrowth (Low)
 - Unburned
 - Low Severity
 - Moderate-Low Severity
 - Moderate-High Severity
 - High Severity



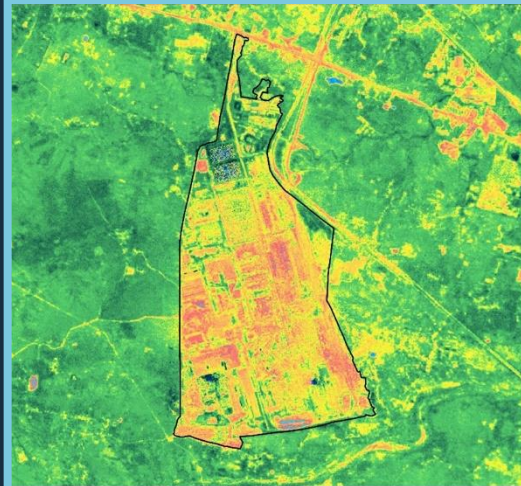


Tree Species Cover Map

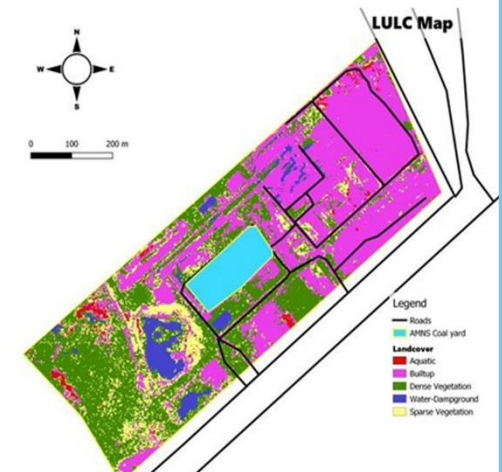
- Legend**
 □ Site Boundary
 Tree Cover
- Tree_cover.types copy**
- Acacia auriculiformis
 - Albizia lebeck
 - Alstonia scholaris
 - Anogossiss acuminata
 - Azadirachta indica
 - Borassus flabellifer
 - Callistemon viminalis
 - Cassia siamea
 - Delonix regia
 - Ficus benghalensis
 - Ficus religiosa
 - Leucaena leucocephala
 - Markhamia lutea
 - Millingtonia hortensis
 - Neolamarckia cadamba
 - Peltophorum pterocarpum
 - Plumeria alba
 - Pongamia pinnata
 - Pterospermum acerifolium
 - Roystonea regia
 - Samanea saman
 - Spathodea campanulata
 - Syzygium cumini
 - Tabebuia rosea
 - Tamarindus indica
 - Terminalia arjuna
 - Terminalia catappa
 - Terminalia phillyreifolia
 - Trachycarpus fortunei
 - Wodyetia bifurcata
 - Ziziphus jujube



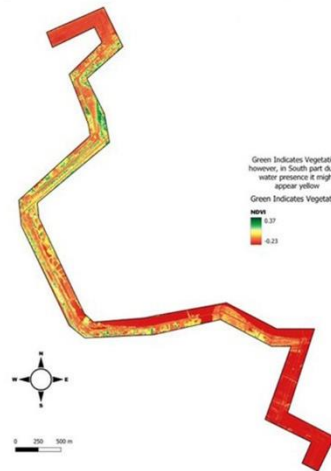
Tree Species Cover Map



Enhanced Vegetation Map



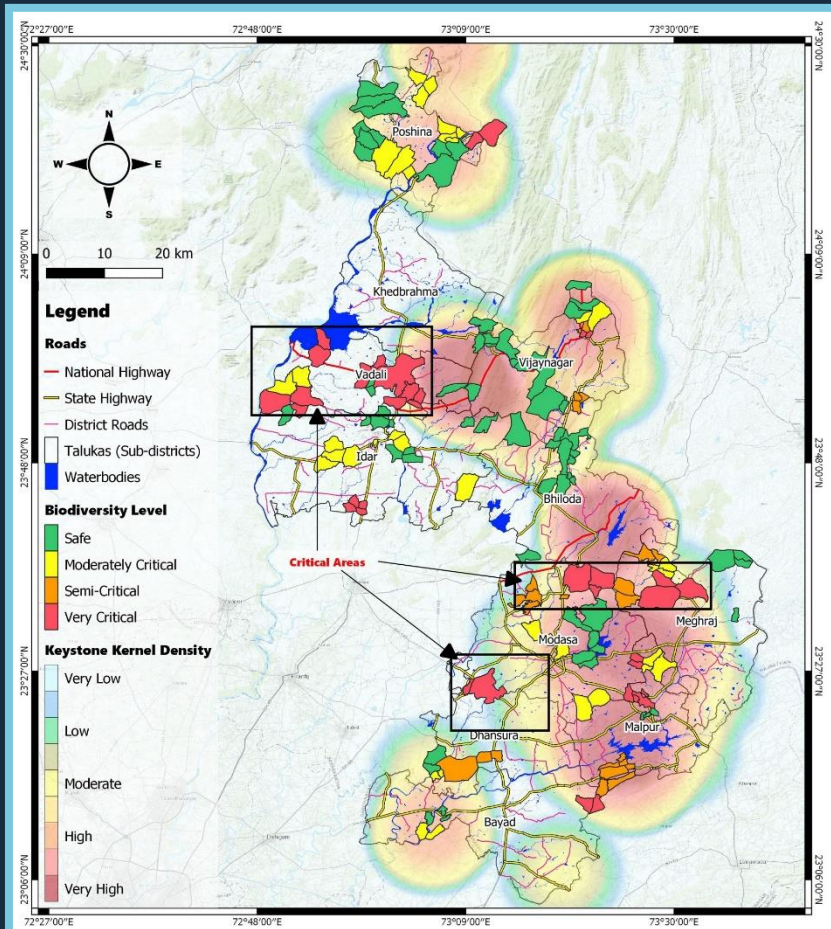
Industrial Landcover Map



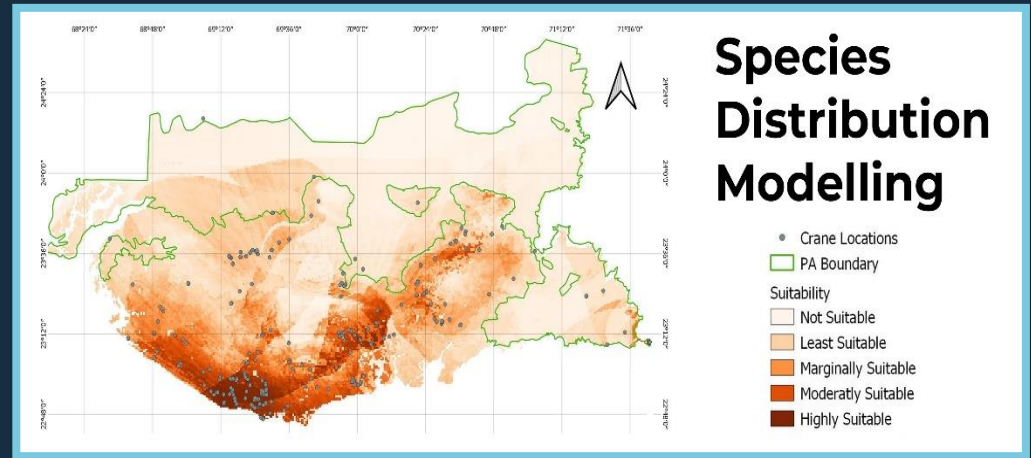
Greenbelt Map



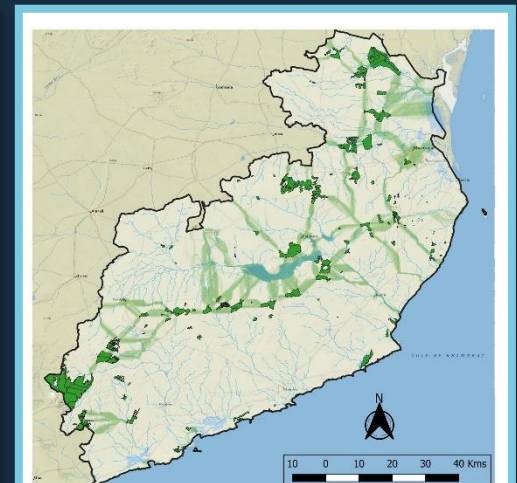
High Resolution Industrial Belt



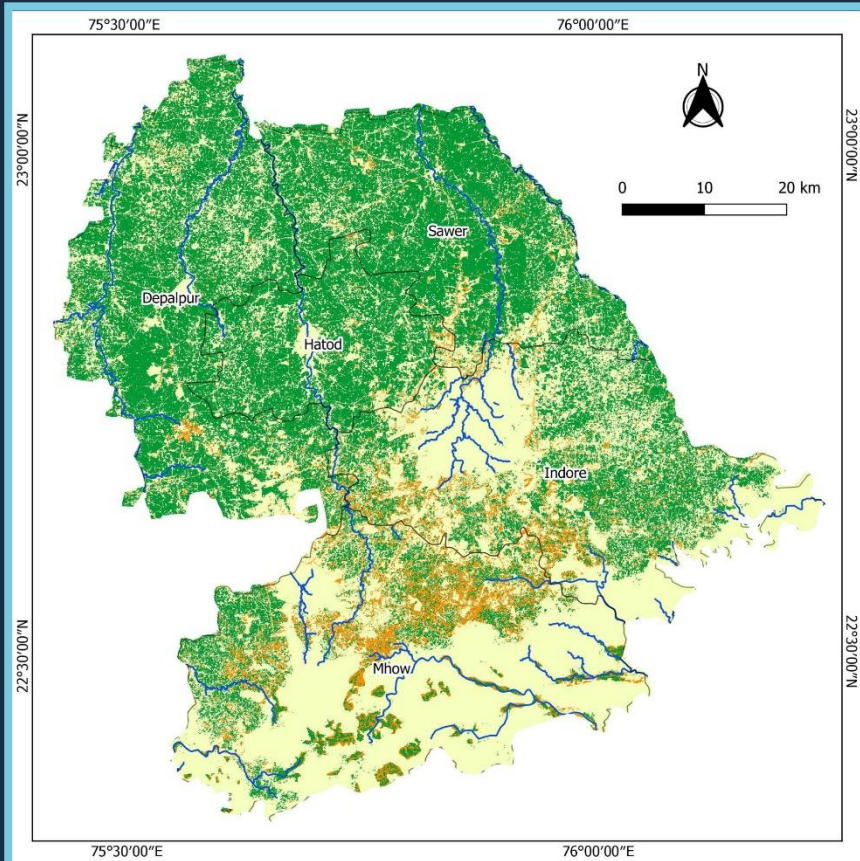
Species Richness and Biodiversity Mapping



Home Range Mapping



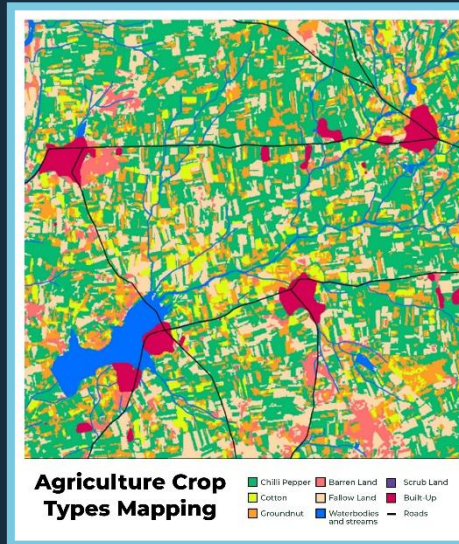
Wildlife Corridor Mapping



Irrigation Status Monitoring

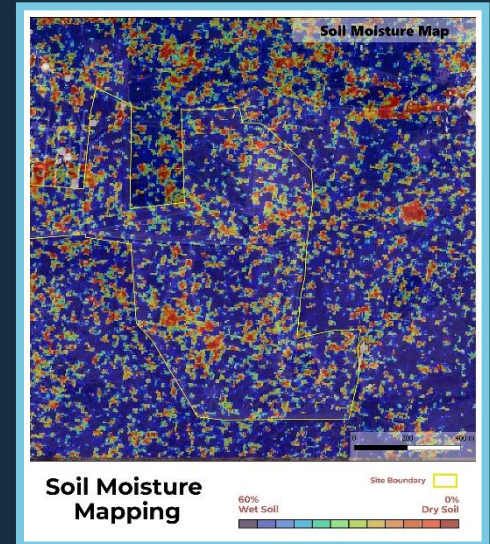
Irrigation Status Classes

- Major Streams/Canals
- Irrigated Cropped Area
- Non-Cropped Area
- Non-Irrigated Cropped Area



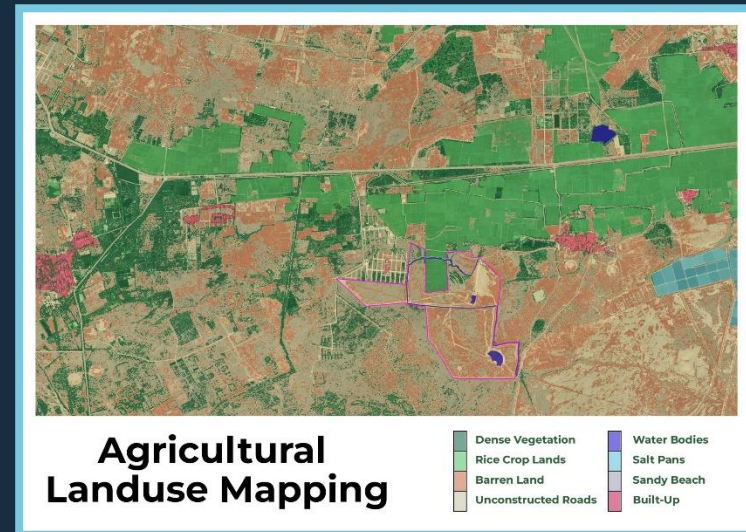
Agriculture Crop Types Mapping

- Chili Pepper
- Cotton
- Groundnut
- Barren Land
- Fallow Land
- Waterbodies and streams
- Scrub Land
- Bulk-Up
- Roads



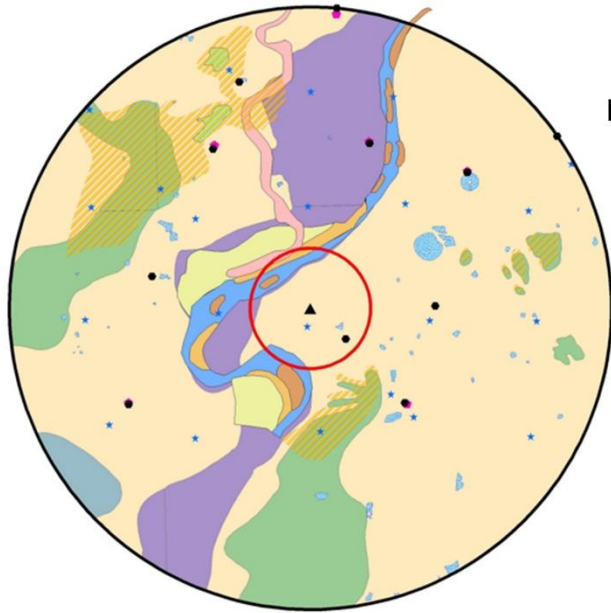
Soil Moisture Mapping

- 60% Wet Soil
- 0% Dry Soil
- Site Boundary

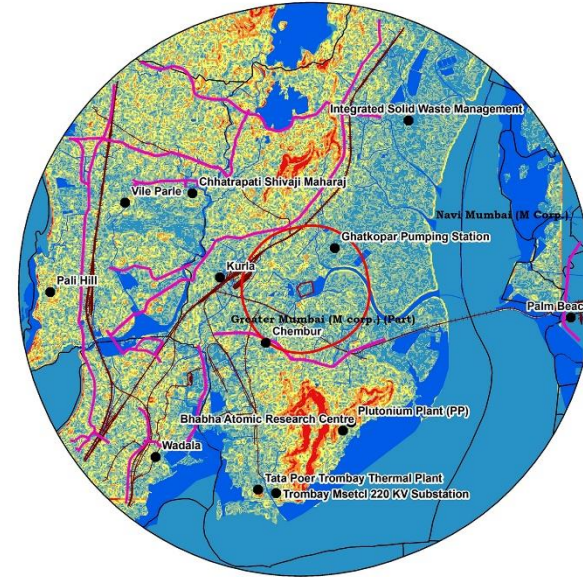


Agricultural Landuse Mapping

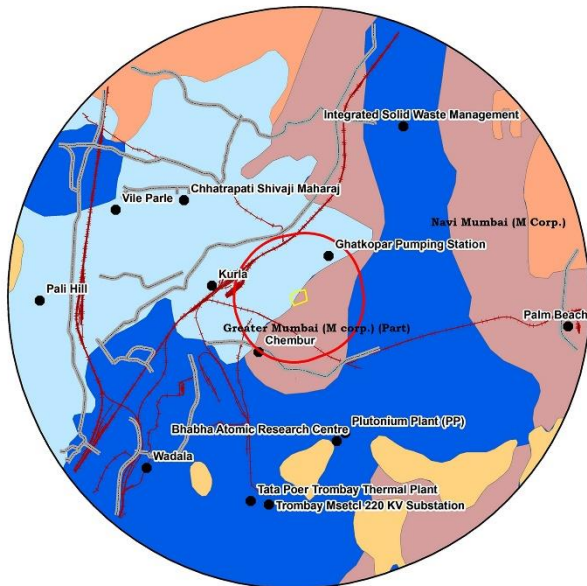
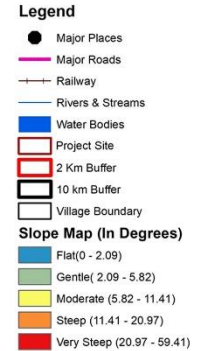
- Dense Vegetation
- Rice Crop Lands
- Barren Land
- Unconstructed Roads
- Water Bodies
- Salt Pans
- Sandy Beach
- Built-Up



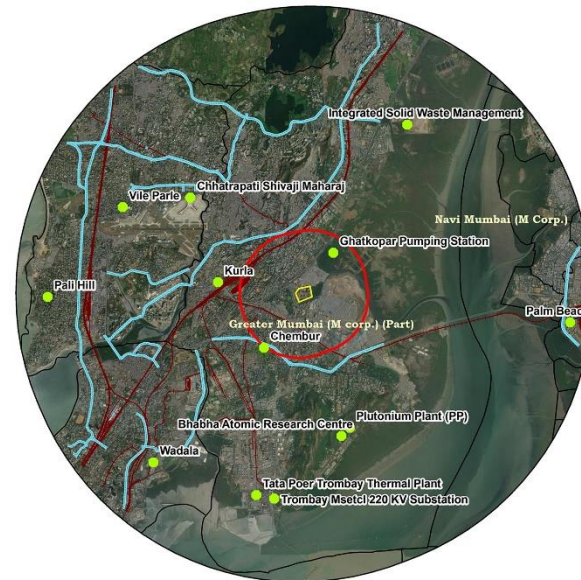
Hydro morphology



Slope Mapping

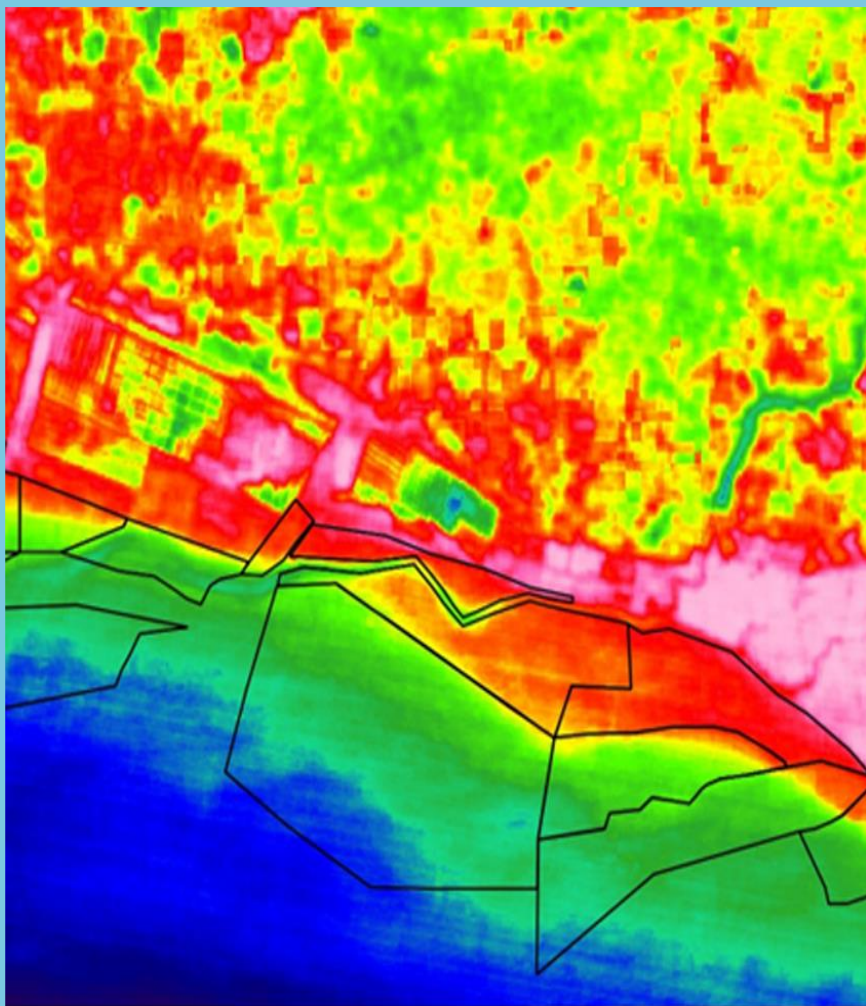


Soil Mapping



Locality Mapping

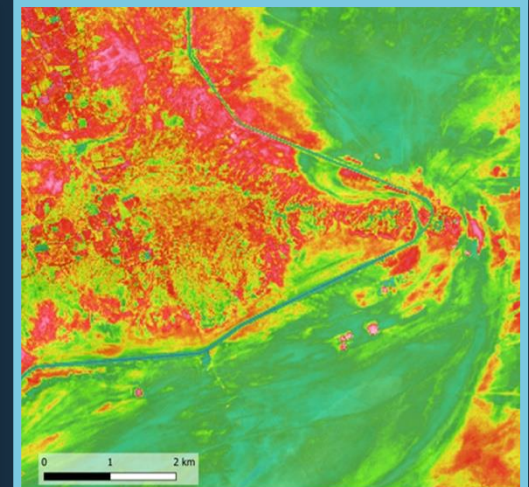




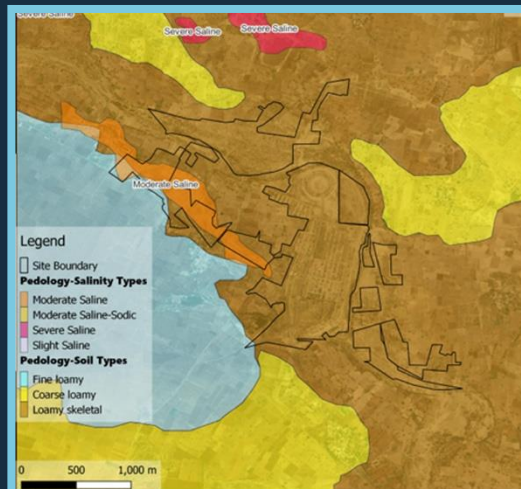
Carbon Stock Assessment



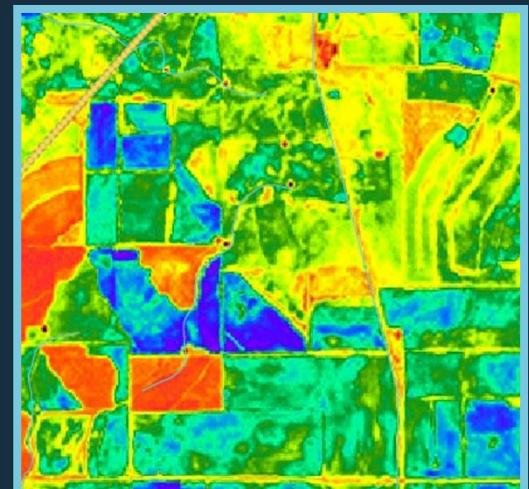
Sea Level Rise



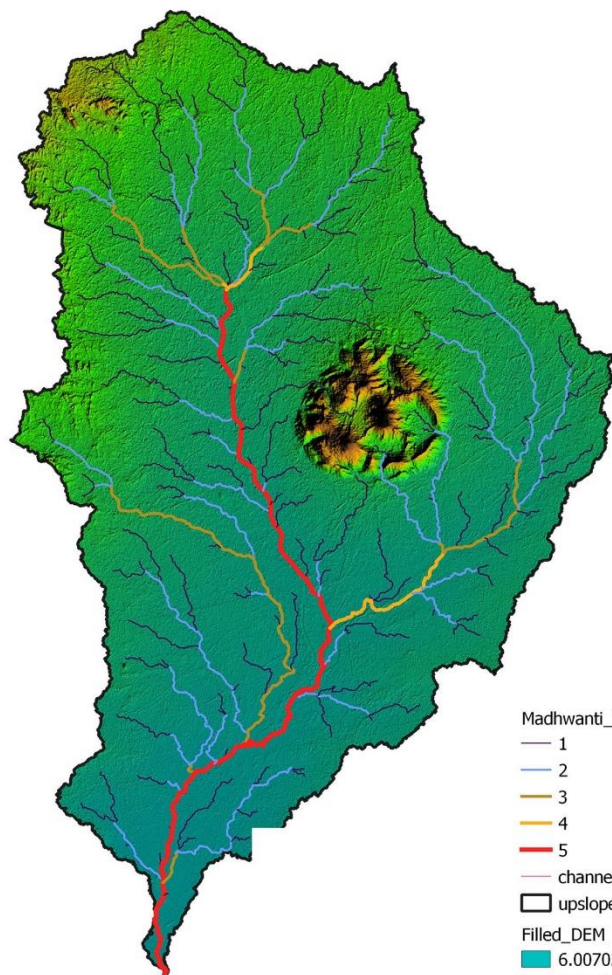
Salinity Mapping



Soil Type Mapping



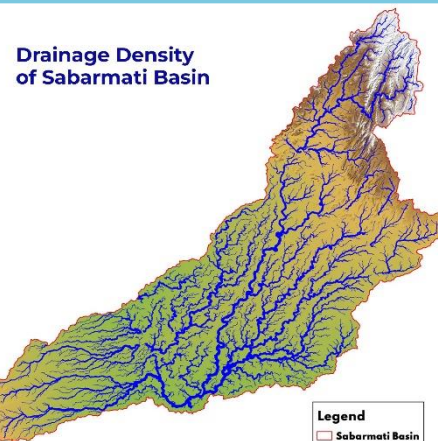
Crop Carbon Inventory



20 km
10
0

- Madhwanti_Streams
- 1
 - 2
 - 3
 - 4
 - 5
 - channels
 - upslopevector
- Filled_DEM
- 6.00702953338623
 - 207.50527215004
 - 409.003514766693
 - 610.501757383347
 - 812

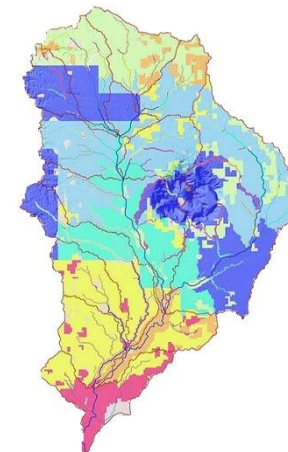
Watershed Mapping



Drainage Density of Sabarmati Basin

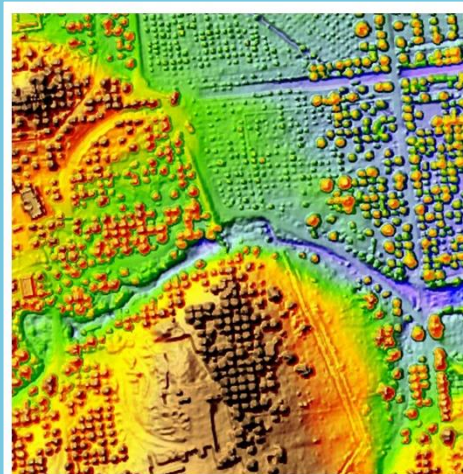
- Legend**
- Sabarmati Basin
 - Drainage Density
 - 0 - 0.01
 - 0.01 - 0.04
 - 0.04 - 0.06
 - 0.06 - 0.12
 - 0.12 - 0.22

Morphometry Analysis

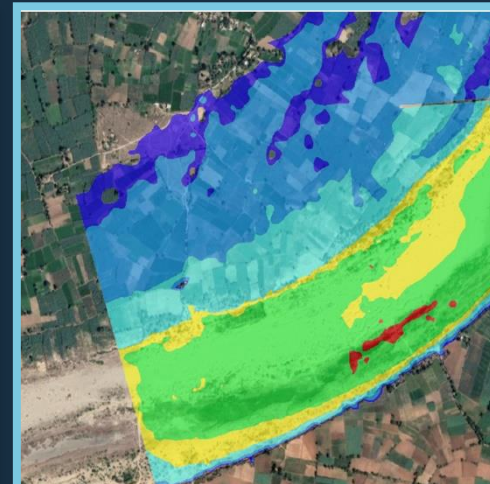


- Streams
- Subbasins
- Evapotranspiration (in mm)
- 2548 - 6261
- 6261 - 6434
- 6434 - 6590
- 6590 - 6924
- 6924 - 7080
- 7080 - 7867
- 7867 - 34265

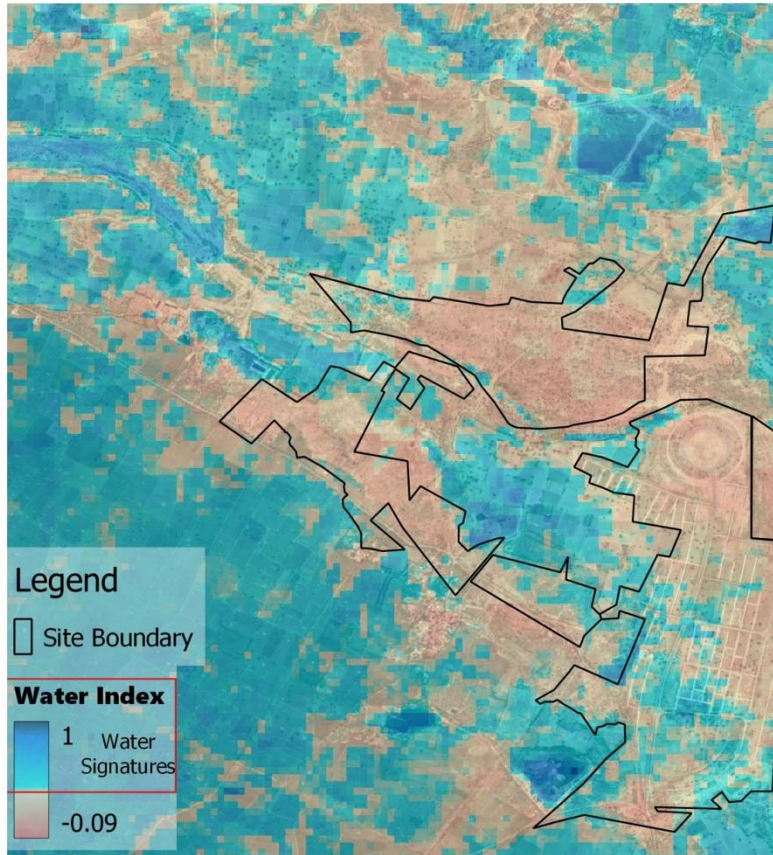
Hydro-Climatological Models



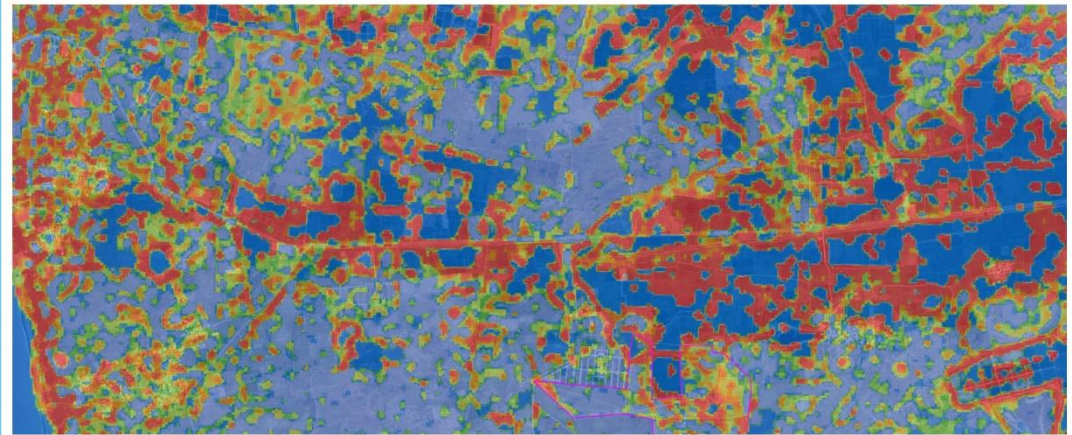
Flood Modelling



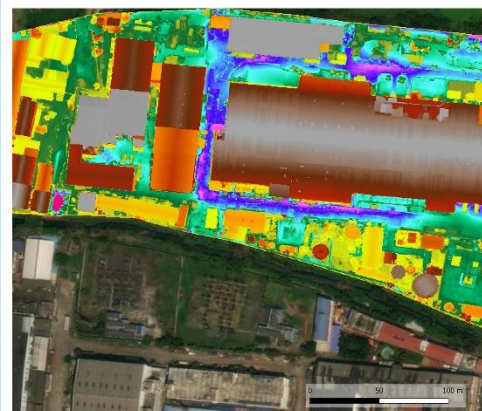
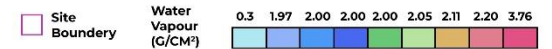
Water Resource Mapping



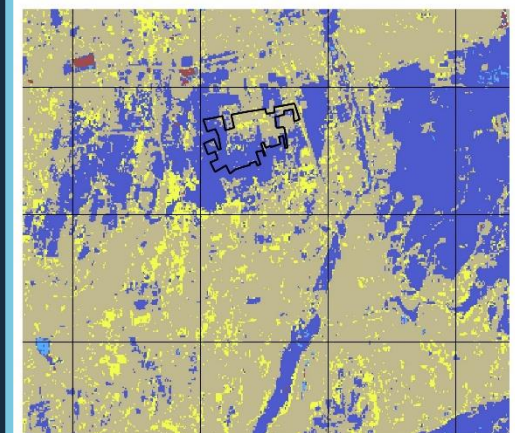
Temporal Water Level Map



Water Vapour Map



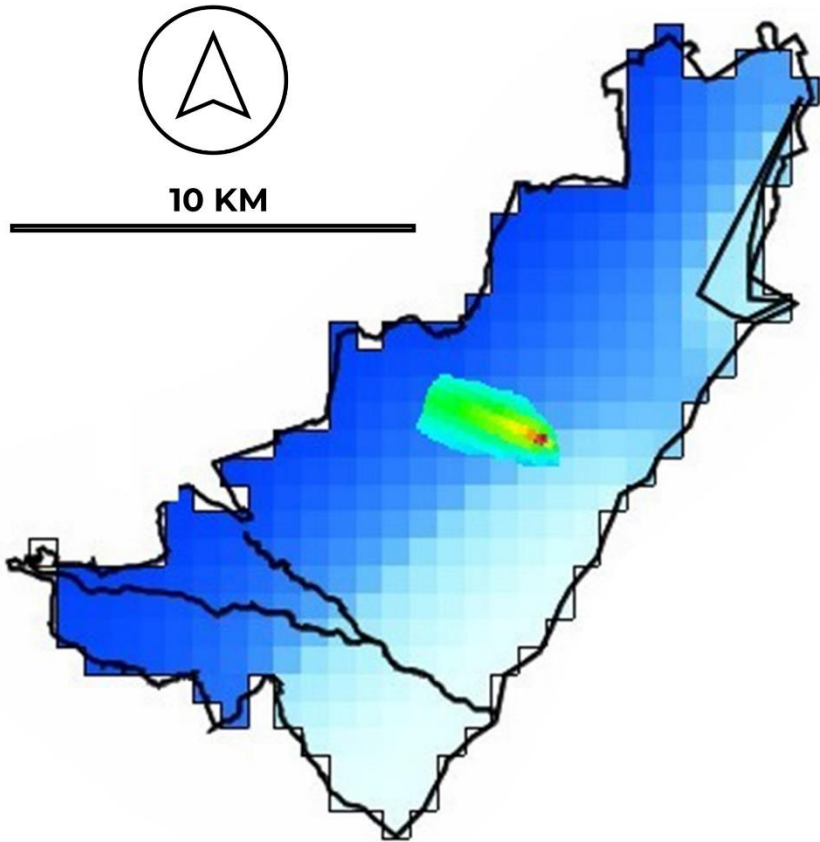
Digital Terrain Modelling



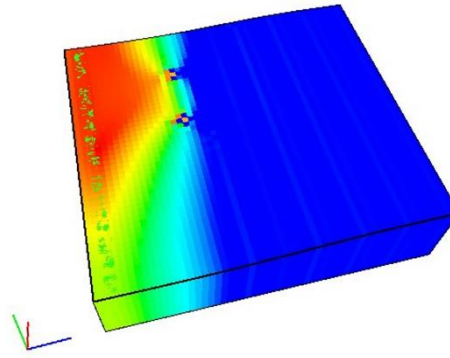
Surface Water Category



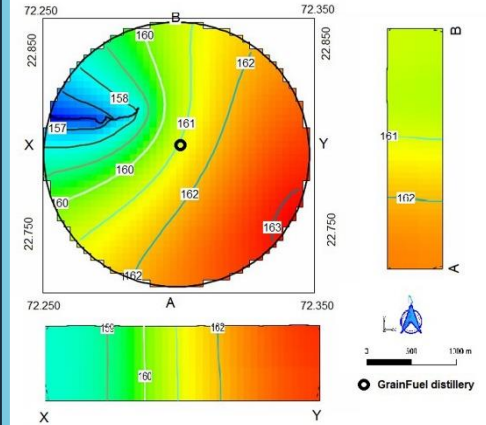
GROUND WATER MODELLING



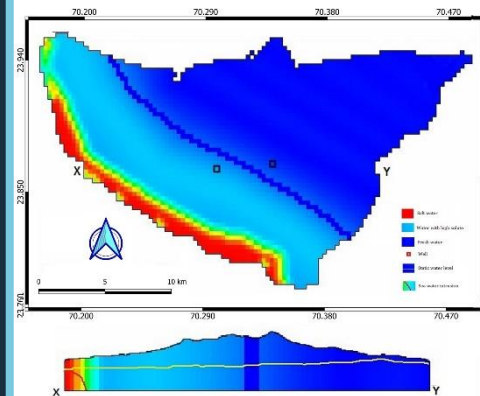
Contamination Transport Modelling



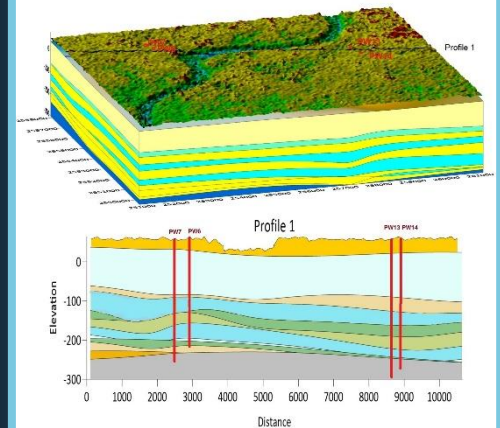
Well Extraction Mapping



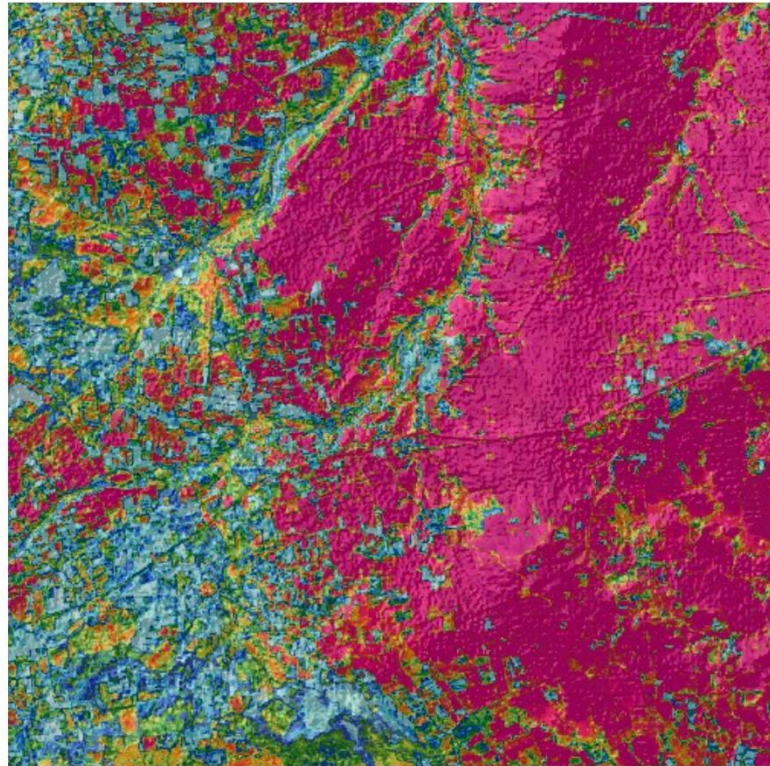
Groundwater Contours



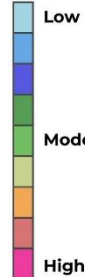
Seawater Intrusion Modelling



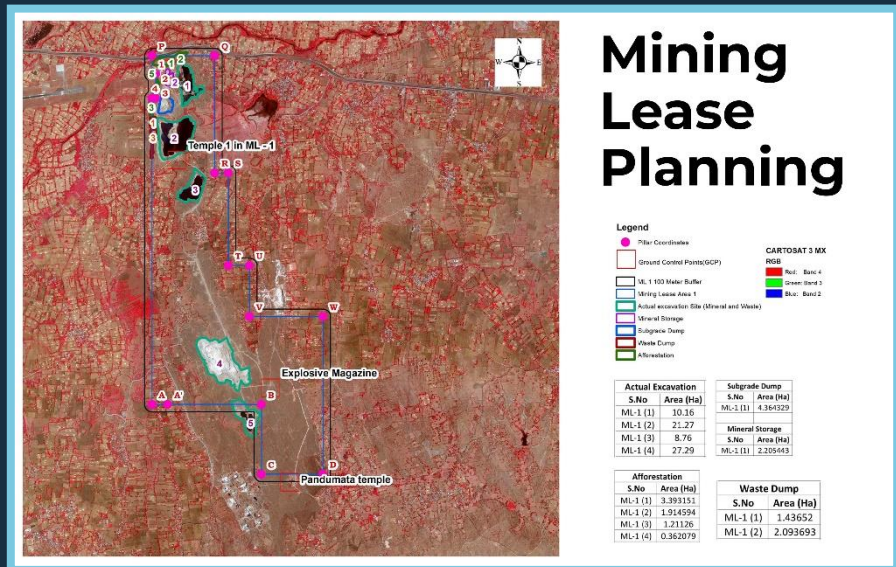
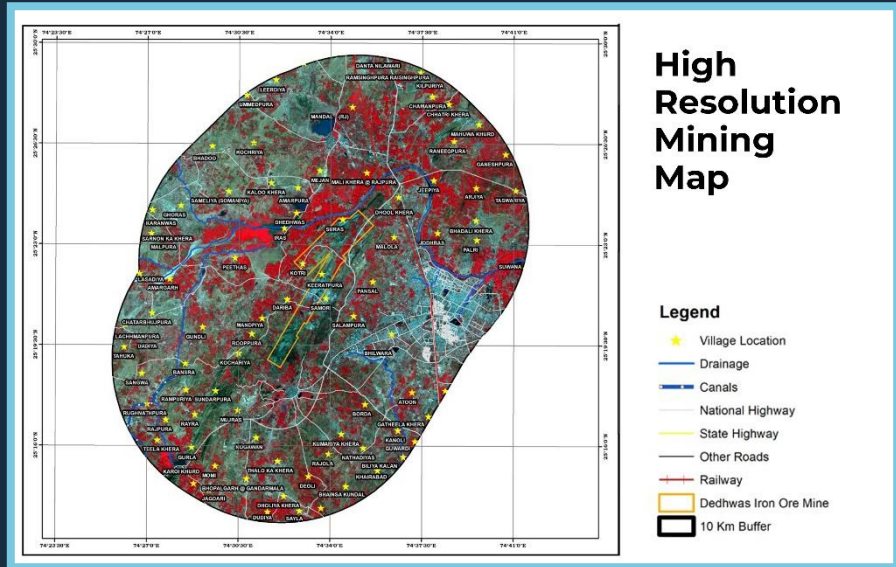
3D Aquifer Modelling



Ferrous Iron Content



Mineral Exploration

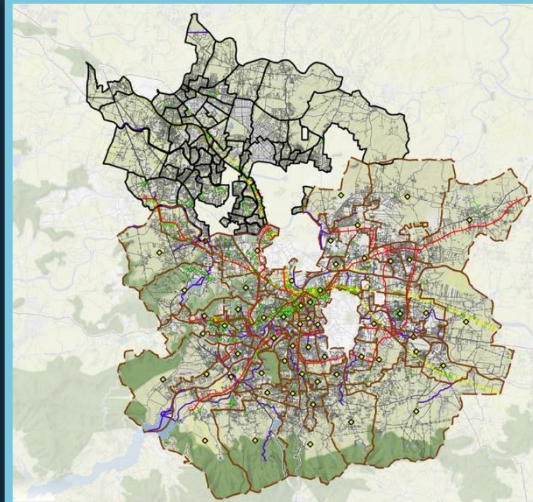




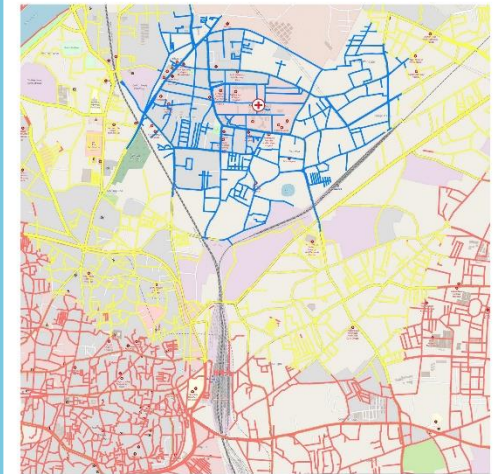
Machine Learning based

Building Footprint Extraction

 Buildings

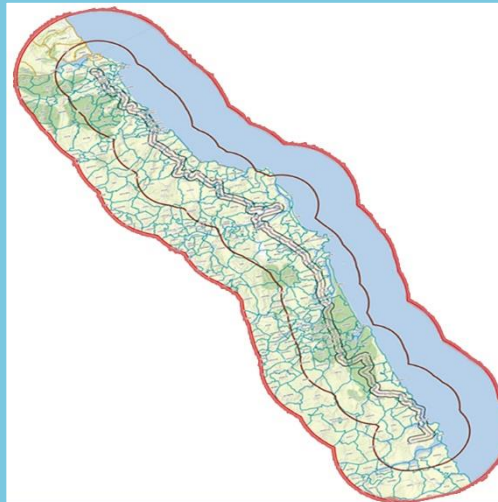


Network Analysis Map

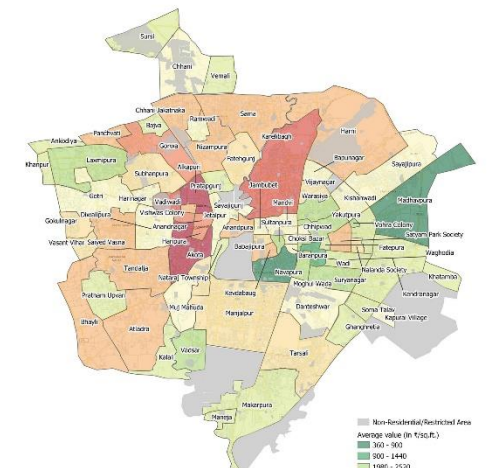


Hospital Networking

Legend
● Civil Hospital
— 5 — 10 — 20
Ambulance Travel Time (mins) on Roads



Highway Expansion Project

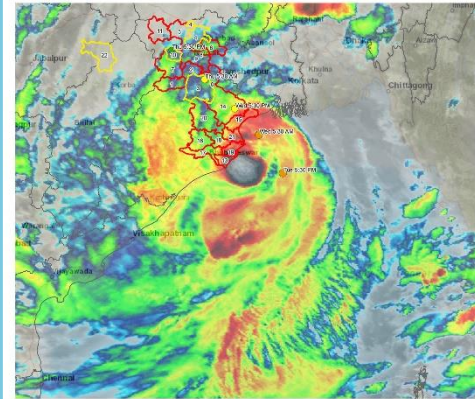


Real Estate Mapping

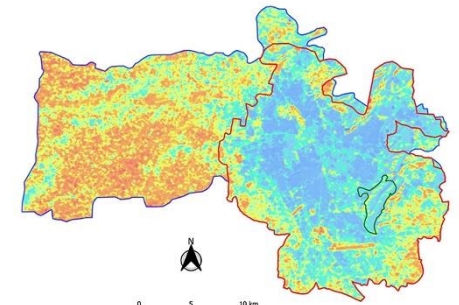
— Non-Residential/Restricted Area
Average value (INR/sq.ft.)
300 - 900
900 - 1440
1440 - 2520
2520 - 3060
3060 - 3600
3600 - 4140
4140 - 4680
4680 - 5220
5220 - 5760
5760 - 6300



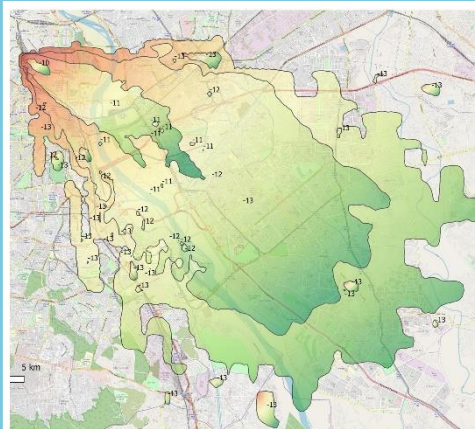
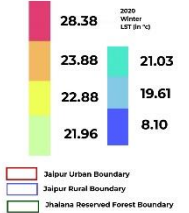
Urban Temperature Modelling



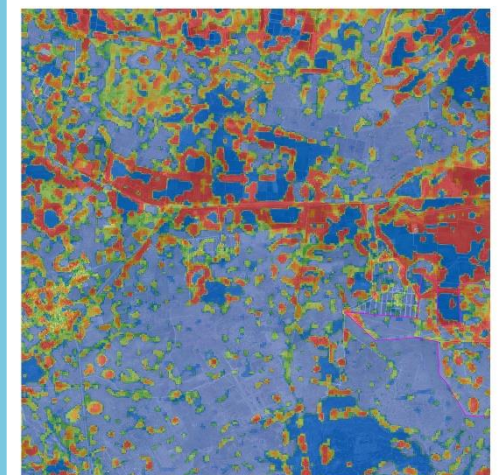
Cyclone Forecast Mapping



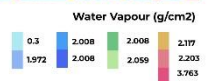
Land Surface Temperature Mapping

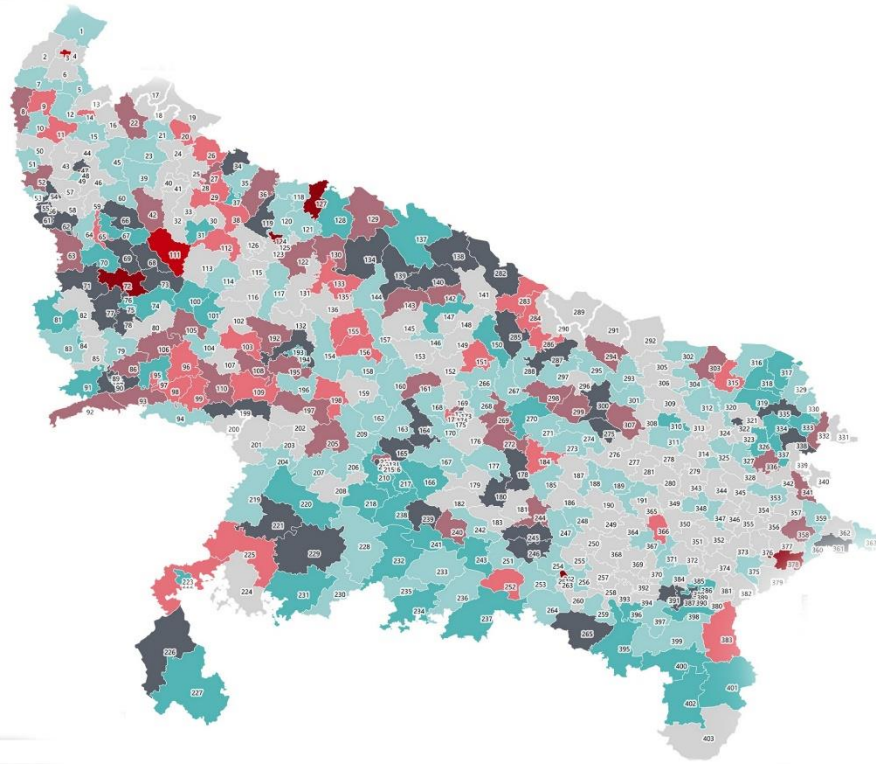


Air Pollution Modelling

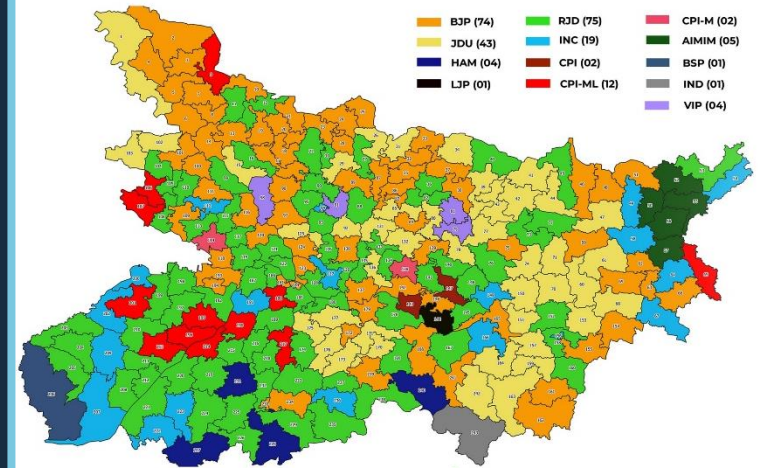
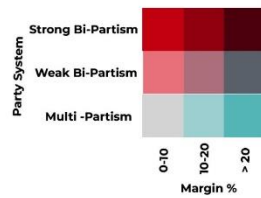


Moisture Mapping

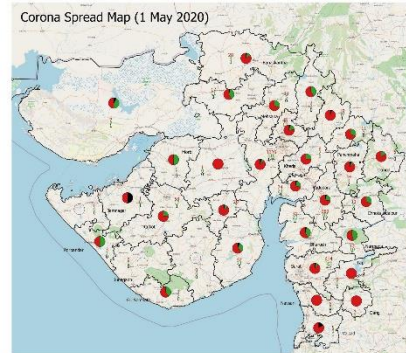




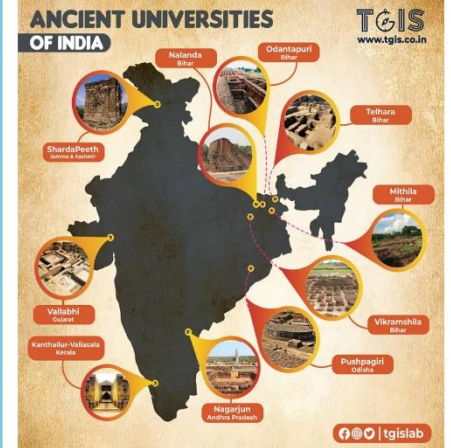
Demographical Mapping



National/ State Election Mapping



Public Health Mapping



Historical Mapping




The Geographical Information System Lab
ISO 9001:2015 Certified Company

www.tgis.co.in


 +919898120110

 info@tgis.co.in | infotgislab@gmail.com

 Touch to Explore



www.tgis.co.in

 526, Iscon Emporio, Jodhpur Cross Rd, Satellite, Ahmedabad, Gujarat. 380015.